

Comeval Valve Systems



Vendor's Appraisal File

www.comeval.es

1. Corporate Information:	3
1.1 Foundation and Group Structure	3
1.2 COMEVAL VALVE SYSTEMS location	4
1.3 Human Asset and Corporate Values of COMEVAL VALVE SYSTEMS	5
1.4 COMEVAL VALVE SYSTEMS facilities	5
1.5 Main Company Financial Data	6
2. COMEVAL VALVE SYSTEMS Sales Network	7
2.1 Geographical Scope	7
2.2 Market sectors:	8
2.3 Reference List	8
3. Quality Management System and Organization	9
3.1 Quality Assurance Certification	9
3.2 Quality Manual	9
3.3 Organizational Chart	9
4. Manufacture and QC capabilities:	10
4.1 Flow Diagramme	10
4.2 Product Design and Development	12
4.3 Castings / Foundry Vendors	12
4.4 Cleaning, Machining and Assembly	13
4.5 Surface Preparation and Painting	15
4.6 Tests and Non Destructive Examinations	16
4.7 Preservation and packing for shipment	18
4.8 Aftermarket & Plant Service	18
5. Registered Brands	19
6. Product Range	19
DIAVAL® - Diaphragm Valves	20
UNIWAT® - Butterfly Valves and Actuators	20
UNIWAT® - Water Works Line	21
UNIFLOW® - Metal Seated Valves, Ball Valves and Strainers	21
TORAFLEX® - Rubber Joints and Metal Expansion Compensators	21
7. Product certifications and approvals	27
7.1 Company certifications	27
7.2 Product certifications and approvals	28
PED Pressure Equipment Directive 2014/68/EU – Module H	29
Equipment and Protective Systems Intended for use in Potentially Explosive Atmospheres Directive	30
PED Pressure Equipment Directive 2014/68/EU – Module A	31
EAC	36
FIRE SAFE to API 6FA	37
FIRE SAFE to API 607	38
WRAS APPROVAL	39
8. Annexes	41
8.1 Corporate Catalogue – International Business Unit.	41
8.2 Reference List.	41
8.3 Quality Manual	41
8.4 Typical Format Material Test Report 3.1	41
8.5 Typical Format Inspection & Test Plan	41
8.6 Standard Terms and Conditions (Guarantee Coverage)	41
8.7 Engineering Catalogues	41
8.8 Certificate of Registration	41

VENDOR'S APPRAISAL FILE

1. Corporate Information:

1.1 Foundation and Group Structure

COMEVAL VALVE SYSTEMS is a leading international company in the field of valves and flow control products as well as engineering flow systems. Established in 1974, with main headquarters in EL PUIG, Valencia (Spain), its continuous growth set the path to become a major international player in the manufacturing of a wide range of products to complete a rich portfolio of private labels as well as in the valve distribution business.

Since January 2011 COMEVAL VALVE SYSTEMS became part of the ARI ARMATUREN International Group of Companies thus reinforcing their international network of subsidiaries and owned companies. ARI ARMATUREN is a German manufacturer of a wide range of valves for steam, heat transfer fluids and processes having an international coverage and a reputation gained over the years thanks to a strict commitment to quality, product design, performance and flexible deliveries. This integration favored the expansion of the COMEVAL® range of private labels to further shores whilst appointing us within the Group as the competence centre for complete valve packages.



View of HQs facilities in EL PUIG, Valencia, Spain

COMEVAL VALVE SYSTEMS S.L. & Cia Soc. Com.

Les Rotes, 15 46540 EL PUIG (Valencia) SPAIN

Tel. +34 961 479 011* Fax +34 961 472 799

www.comeval.es

VAT # ES B.46082475

Sales offices and aftermarket points across the country (Barcelona, Madrid, Bilbao, Seville, Valladolid)

ARI ARMATUREN is an International Group Headquartered in Schloss Holte – Stukenbrock (N. Westfalia), Germany with subsidiaries, owned companies and manufacturing facilities around the world. With a total work force of more than 1500 employees spread all over the five continents is rated as one of the largest international corporations for the valve and flow control products market sector. The Company values are rooted on the international minded and cross cultural relationships.

The ARI ARMATUREN main production facility is based in Schloss Holte – Stukenbrock where a wide basket of valves are manufactured by use of the latest automation techniques. Isolating, check, control, safety valves and trapping systems all can be procured under a same compact manufacturer.

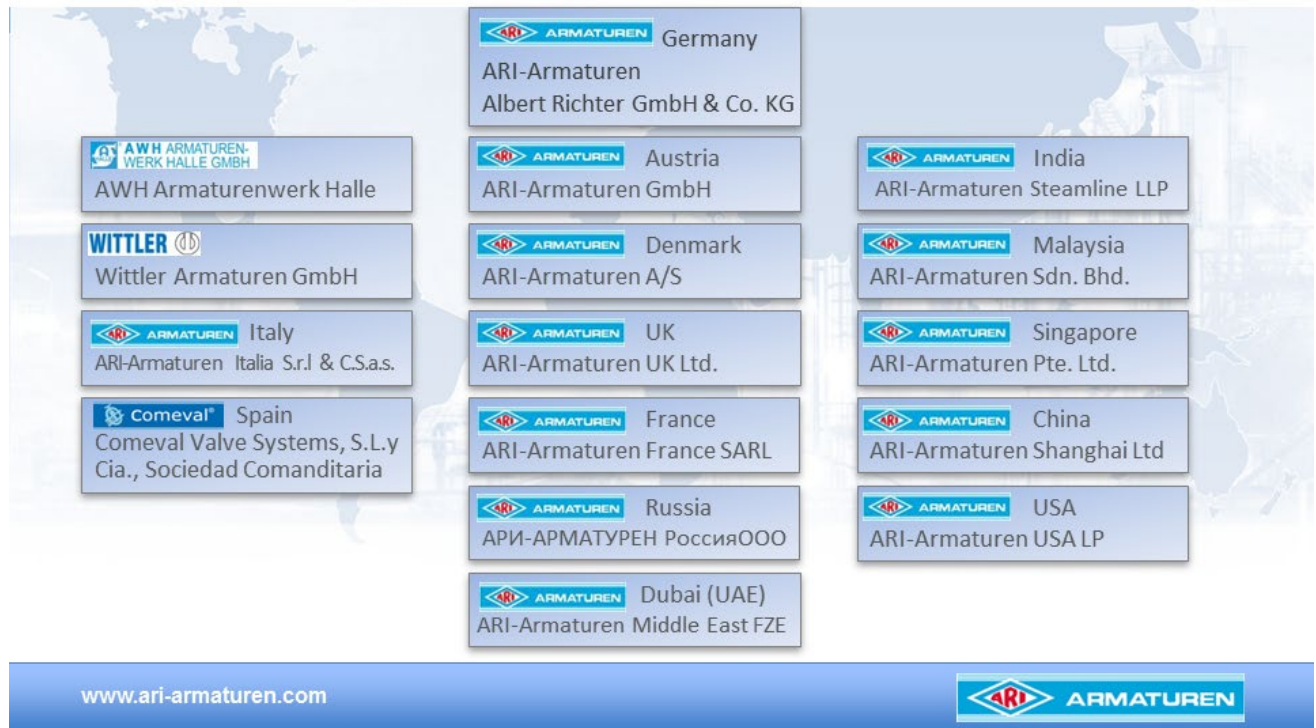


View of ARI ARMATUREN HQs facilities in SHS, Germany

The ARI ARMATUREN Group structure is comprehensive of sales subsidiaries (offices) as well as Companies keeping the whole business identity throughout the manufacture and distribution of other complementary products.

ARI – a strong partner close to you

The ARI group and its branch offices



1.2 COMEVAL VALVE SYSTEMS location

The company enjoys a convenient location with superb access to the Valencia International Airport, the Port of Valencia in the Mediterranean Sea and High Speed Train Station of JS in a perimeter of less than 20 Kms. It is connected with Madrid and Barcelona at an equidistant distance of 350 Kms by motorway with international carriers' capacity. The city of Valencia is situated at 18 Kms and has all business accommodations of hotels, services and amenities as required.

Location can be googled in this link: <http://www.comeval.es/en/contacto-ubicacion.html>



EL PUIG, Valencia – GPS latitude: 39°

Longitude -0.300236

For the purpose of trading benefits and Visa: Spain is member country of the EU and Schengen Agreement

1.3 Human Asset and Corporate Values of COMEVAL VALVE SYSTEMS

COMEVAL VALVE SYSTEMS staff has a staff of more than 54 employees combining blue and white collar workers with a special emphasis on customer orientation by means of high level service, flexibility, and ability to offer products and solutions to satisfy the demands of any customer in a wide range of market sectors.

The COMEVAL VALVE SYSTEMS team combines the experience gained from being a company with more than 40 years serving the industry and having the empowerment of a young and dynamic team in all its diverse company departments. The COMEVAL VALVE SYSTEMS human capital is a valuable asset on which the Department invests in training, in recognition of the importance it has within the Company. Our Company team that has accumulated a remarkable experience in fluid application and an experience that is put to customer service offering much more than valves. COMEVAL VALVE SYSTEMS has forged clever business synergies over the past years having created unique products of high quality standard, moderate prices of great appeal to the distributor combined with large stock availability and a superb after-market service. This is the core of our business, our qualities, and the ones customers get with every product of ours.

Company Mission:

Being part of our customers' success through high competence, specialization and quality flow control products.

Company Vision:

It is based on setting up long term business partnerships on a global world where customers' choices are not driven by geographical reasons any longer but by international competence.

Company Corporate Values:

They are sensed at every level of the Comeval Valve Systems Organization and aimed at our customers: honesty, flexibility, service orientation, freedom to perform, respect for diversity, team work and continuous quality enhancement.

Environmental Policy:

Respect for the environment forms part of our corporate values and we are committed to protecting the environment in all procedures undertaken. We put into practice our Environmental Policy Manual through our daily activities by recycling paper, cardboard, metal and plastic; using special containers to collect waste such as rubber and oil, paints, asbestos-free sealants, reusing water as a scarce commodity in closed circuit tanks for hydrostatic and tightness testing.

Category Breakdown of personnel at COMEVAL VALVE SYSTEMS		Number
WHITE COLLAR TOTAL		30
Management		2
Graduate Engineers (R&D and QC)		10
Administrative and Procurement		9
Sales and Commercial personnel		9
BLUE COLLAR TOTAL		24
Workshop – assembly and testing		14
Packing and Dispatch		4
After Market, Service (on / off site)		6

1.4 COMEVAL VALVE SYSTEMS facilities

The Company facilities of EL PUIG are occupying a total surface of 4000 sq. metres organized in three main halls as follows:

- Head Office Building staffing Design Engineering, Sales, Administrative and QA personnel. Includes training facilities.
- Operations Centre; industrial hall more than 2500 sq. metres roofed area hosting assembly, testing, painting, QC and logistics.
- Stock Management hall with capacity of more than 2500 pallet boxes.



Detailed information about the plant and testing equipment is provided in Chapter nº 4 of this Vendors Book.

1.5 Main Company Financial Data

Hereunder is tabulated information about main financial parametres of the Company over the last two financial years, this information can be updated and / or completed on request of the petitioner and subject to approval by the Company management.

Data / Parameter	Fix Data – structural
Founded	1975
Paid Up Capital	301.000 €
Acquired ARI Group	2010
Nº employees Spain	53
Nº employees Group	1220
<i>Financial Spain</i> <i>(in thousands EURO)</i>	

Data / Parameter	Year 2016	Year 2017 (To end June)
Sales Turnover	14355	8000
EBT	195	285
EQUITY	8397	8682

Total

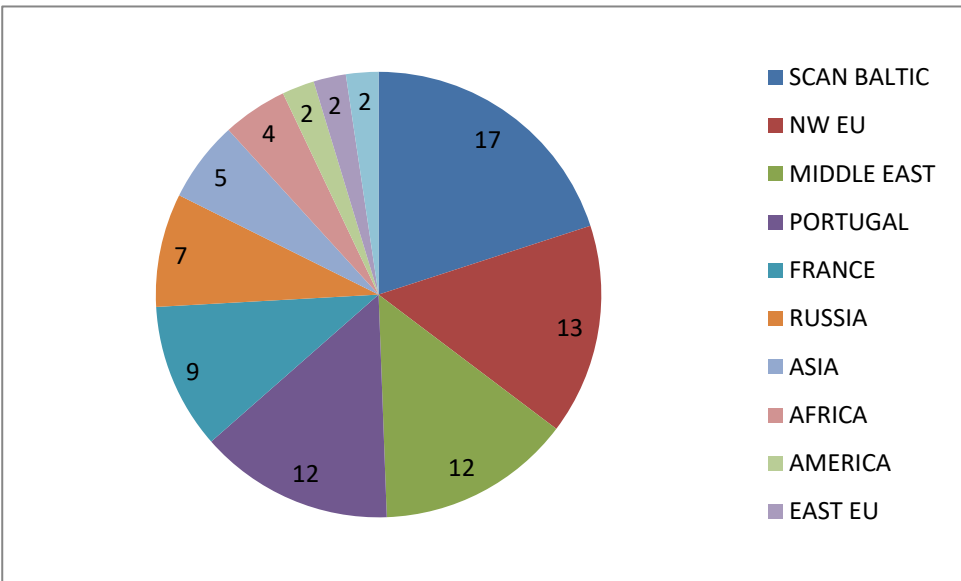
Source: COMEVAL FINANCIAL DEPARTMENT – Data is strictly confidential and third party disclosure is forbidden.

2. COMEVAL VALVE SYSTEMS Sales Network

2.1 Geographical Scope

The company sales are performed in a worldwide spectrum with sales over the 5 continents and in more than 65 countries. There are distribution partners set up in most of the international countries the company operates. These partners are providing the local customers with all company expertise and support of COMEVAL VALVE SYSTEMS through after market, spare parts, engineering recommendation, project management capabilities, off site and on site training, ex-stock deliveries and approvals.

The following graph reflects the breakdown of major international market regions where COMEVAL VALVE SYSTEMS manufacture products are mainly exported. It is expressed in % as follows:



From our central location in Spain the international Trade is conducted through Business Partners and local representatives all over the world. Regular shipments take place on a daily basis by land (Europe) and weekly by sea and air to any country of the world.

2.2 Market sectors:

The COMEVAL® range of products are rich enough to cover many market sectors encountered in HVAC, WATER WORKS, POWER, PROCESS, MARINE and INDUSTRY.



The COMEVAL VALVE SYSTEMS range of products is typically encountered in application fields such as the following:

Process Plants

(Fertilizers, Phosphates, Mining, Ammonia, Ceramics, Slurries, mineral oils, lubricating and quenching oils..)

HVAC

(Hospitals, Public Buildings, Shopping Malls, Hotels, Leisure Centres, Sport centres..)

Water Works

(Irrigation Systems, Waste and Water Treatment, water ducts, Reverse Osmosis..)

Power

(Renewable energy, fossil energy, oil & gas, Refineries, Combined Cycle plants, thermoelectric, hydroelectric..)

Marine

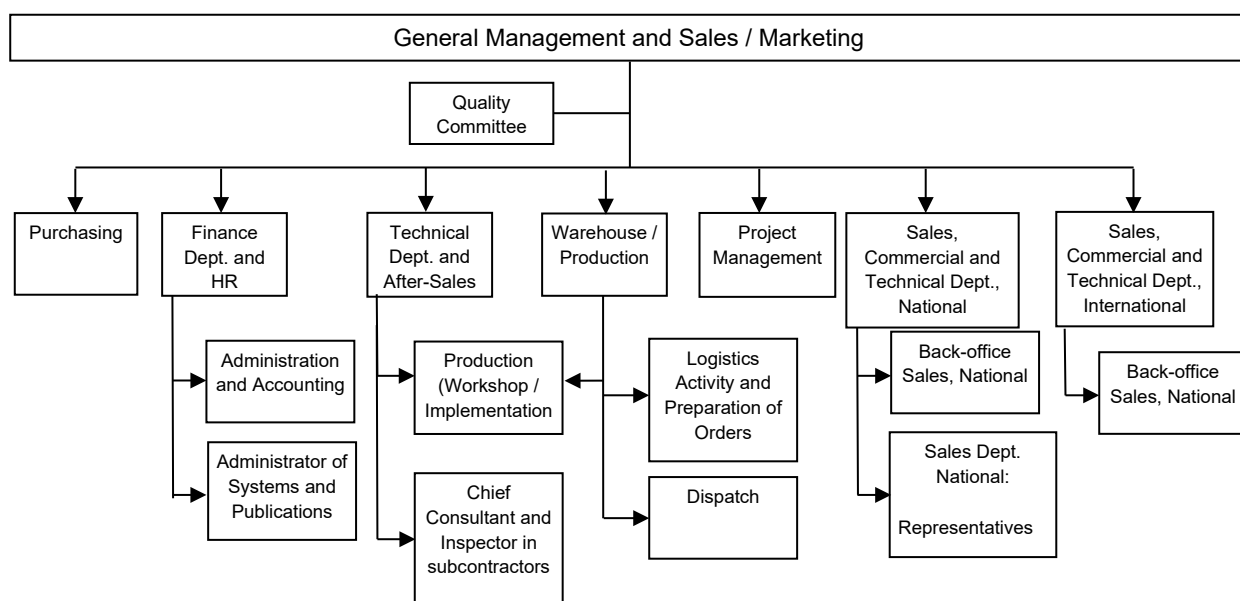
(Shipyard, marine engines, winches, gear boxes..)

Industry

(Food and beverage, textile, paints, automation, pressure vessels..)

2.3 Reference List

We have an extensive reference list segmented by product brand and market sectors which is presented in the last chapter of this dossier.



4. Manufacture and QC capabilities:

COMEVAL VALVE SYSTEMS design and manufacture a range of valves for process, water and steam control and combines diverse subcontractors along the production cycle of the product. Products are engineered in our internal department of "Product Design and Development" where the whole cycle of production is started up. Refer to Flow Diagramme in the coming paragraph and full description of each and all of the diverse cycles along the product development before being placed in the market.

4.1 Flow Diagramme

MANUFACTURE FLOW CHART

Comeval Valve Systems

CONTRACT REVIEW AND PLANNING



Kick-off meeting to review contract and plan the production.

Identifying technical specif./requirements, trade terms. Listing deviations if any.

Final agreement with customer

Tasks and responsibilities assignment. Scheduling.

PRELIMINARY DOCUMENTATION



Listing documents.

Issuing and submittal of Manufacturing Schedule, Quality Plan, Deviation List...

Preparation and Submittal of preliminary drawings and other engineering and contractual documents subjected to submittal / customer approval

Approval by customer HOLD POINT

MANUFACTURING



DESIGN (if not existed or revision needed)

PLAN OF ACTIVITIES

PROCUREMENT and kitting of rough valve parts (castings/forgings/bars/soft parts...)

Inspection / Quality control of incoming parts (specification, visual and dimensional)

Checking of inspections and tests certification (mechanical / chemical...) of incoming parts. Counterchecking in third laboratory when required.

SURFACE TREATMENT & MACHINING

Sand/shot blasting, cleaning, surface protection, machining of shell parts and subcomponents
Inspection / Quality control of final machined parts (visual and dimensional)

ASSEMBLY OF COMPONENTS

Process of assemblage of components
Inspection / Quality control of final assembly products (visual and dimensional)

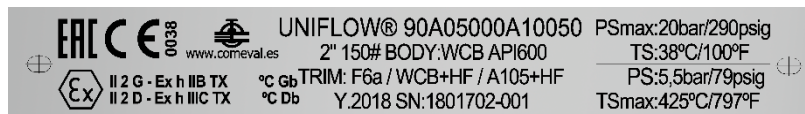
FINAL TESTING

Functional tests
Pressure tests

PAINTING

Surface treatment and painting when applicable
Inspection / Quality control of painting

TAGGING, LABELLING AND FINAL SUPERVISION



ISSUANCE OF CERTIFICATES FOR CUSTOMER

PRESERVATION AND PACKING

FINAL DOCUMENTATION AND DISPATCH TO DESTINATION

PLANT AND ENGINEERING TESTING EQUIPMENT

Machining: Through CNC milling, lathes and Drilling work stations. Sand Blasting and Polishing Equipment.

Assembly: 8T Overhead crane, serialized assembly benches, automatic and manual assembly tools.

Electric / Pneumatic boards for power supply, command and control signals on actuators
Painting: paint cabin / Vendors for FBE oven.

Certified measuring equipment: dimensional control (calipers), paint thickness, pressure gauges, torque wrenches, etc.

Pressure test: Computer Controlled Hydraulic Test benches – 600 bar pump capacity, hydro clamped until 48" / pressurized flange plates for any size diameter.

Handling: Overhead crane and fork lifting equipment

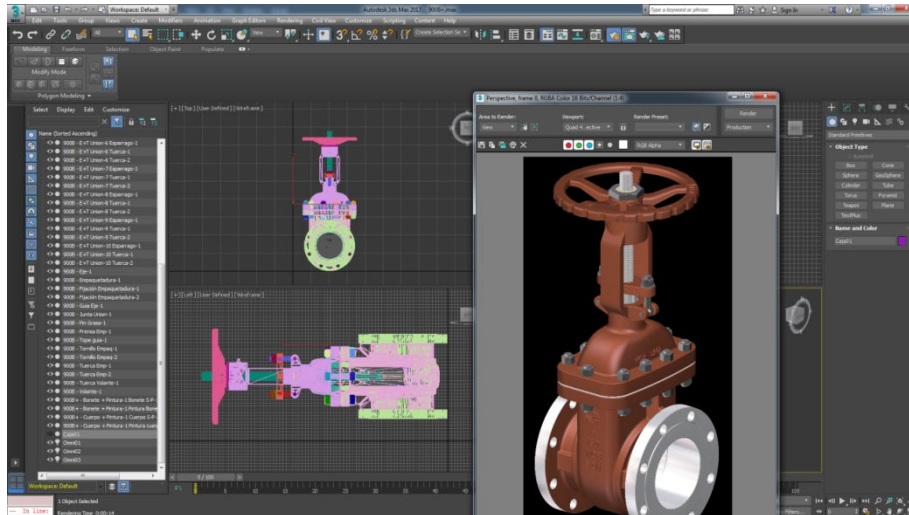
Preservation: Automatic station for manufacture of preservation materials.

Packing: Sea worthy packing – ISPM 15 / Multiple ply cardboard n platforms.

4.2 Product Design and Development

The whole manufacture cycle starts in our Product design and Development where our team of expert engineers applies the latest mechanical design techniques to engineer the products.

We design and pursue the manufacture of a selected range of products to service the diverse market sectors. Through computer assisted design techniques the best products turn out into reality. Our team of design engineers in Spain works together also with German headquarters and local technological institutes.



A team of 10 design engineers work in this department with the help of CAD design software and finite element analysis to design the products and production patterns for castings. The traceability of designs is ensured through our System which is certified by Lloyd's Register in the corresponding Module of ISO 9001 certification.

Other tasks performed in our design and product department are for example:

- Verification of industrial standards
- Verification of Valve International Standards
- Ensuring the compliance of our designed products to the above standards
- Obtaining international approvals and product enhancement records.
- Quality Control checking out points with pattern makers
- Keeping traceability and record of the manufacturing drawings.
- Ensuring compliance with applicable Directives (for ex. PED, API).

4.3 Castings / Foundry Vendors

Our QC department is responsible to ensure the inspection and approval criteria of castings vendors utilized by our Company. Only approved casting shops are eligible to produce our manufacture batch of valve components, mainly body and bonnet shells.



The use of independent castings vendors placed at diverse strategic locations allow us to have a great flexibility in production and ordering diverse castings batches in parallel thus avoiding bottlenecks as much as possible. The list of castings vendors is regularly audited by our internal QC engineers to ensure the approval criteria is maintained.



The value of our brands

Our Company brands are cast onto the main valve bodies with raised letters as well as the company general logo. This standard procedure pursues the objective of clear identification of products always ensuring that are genuine and not faked by third parties. These markings are protected by law and only the approved casting vendors are allowed to do so.

Traceability through heat numbers

Each and all of our main body / bonnet components are provided with a heat number cast with raised letters or punched onto other minor components. These heat numbers are reflecting traceability with the corresponding Mill Test Reports and 3.1 Material Test Certificates.

In coming castings are controlled at vendors site by an independent Body under our company surveillance, this allow us to save time in case of rejections and / or repairs according to the Standard. Other Non-Destructive Examinations for steel alloys and stainless steel materials are regarded as standard as follows: LPT on welded ends or critical areas, MPI and UTs and under request of the customer Rx (radiographic Tests). Heat Treatment is usually carried out at site by same casting vendor before delivering the approved batch to our facilities.

A set of test bars is filed by our QC Department along with each casting batch and set of reports for a 3 Year period and is available to third party surveyors for verification.

4.4 Cleaning, Machining and Assembly

Sand blasting and heat treatment are standard processes taking place immediately after components have been cast, these are processes also carried out at the casting vendor place and reported along with the relevant certificates. Under request of compliance with specific project / customer demands (for example special duties) special NDEs like Charpy Tests (impact tests) at -39°C are performed.



Machining process is carried out through CNC lathes for diverse drillings, flatings, grooves and sections on shells and making of massive components such as spindles, bushings and plugs.



The assembly process starts with the receipt of qualified batches of machined major parts and takes place in a chain process. Components and fasteners are placed at the assembly bench and used into the main pressure retaining parts. The body / Bonnet pressure retaining parts are bolted with automatic tools at the preset torque. The chain assembly process is carried out by valve size batches and supported on assembly benches up to sizes of DN 100. In those cases of larger valve sizes the assembly process is performed separately with the assistance of lifting equipment like an overhead crane.



Assembly Internal Reports:

The assembly works are carried out exclusively by our team of trained workers with worksheets being filled out for the activities. These sheets are matched to the production orders entered into the ERP System. In the event of massive production batches with Repeated work the assembly work can be subcontracted To local centres for reasons of production capacity.

Assembling of automation packages

COMEVAL VALVE SYSTEMS work under a close synergy with some reputable manufacturers of actuators to complete full automation packages for our customers. The valve automation is carried out at our facilities by our trained personnel and is comprehensive of final adjustment and calibration by computer in the case of smart / electronic type



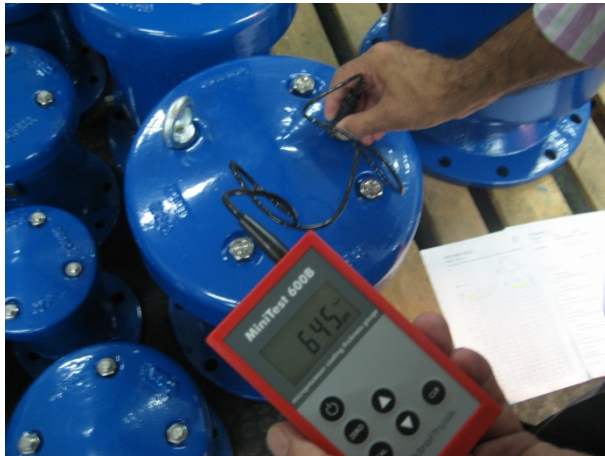
Any actuation service is regarded as a complete functional unit and the complete guarantee is held by COMEVAL VALVE SYSTEMS as authorized centre. The range of actuators is comprehensive of electric, pneumatic and hydraulic and also control accessories and systems.

4.5 Surface Preparation and Painting

Surface preparation and painting are processes that follow diverse routes depending on the kind of product and specification.

- **PAINT BEFORE ASSEMBLY:**

Components for water works are FBE coated in external vendors with the needful plant equipment to process this type of coating. The FBE coating is carried out in an industrial furnace at high temperature to ensure that the EPOXI powder is properly adhered to surface. For smaller than DN 100 valve and bonnet sizes an immersive procedure can be used, especially on small batches. Ensuring that the coating thickness meets the minimal parametres as stated in the TCF is carried out by our QC personnel through the use of electronic thickness Testers. **These painted components are obtained BEFORE assembly given the lack of metal seats and other impeding shapes to FBE process.**



- **PAINT AFTER ASSEMBLY:**

Components for industrial application are painted with liquid paint system; this paint style is the suitable to those industrial valves where metal slots, seats and plugs are part of the valve construction. The paint area is at the external surface and the sort of liquid paints vary according to the product allowable working limitations. This paint process is carried out internally at our facilities with the exception of special paint requirements; for example anti corrosive paint (C5 System), fire resistant or other grades.

These painted components are processed AFTER assembly given the presence of metal slots, seats and other impeding shapes to FBE process.

Our Paint Procedures are available at our Design and QC Department for approval / reporting of Our customers and is comprehensive of surface preparation, specifications, RAL numbers and so on.

4.6 Tests and Non Destructive Examinations

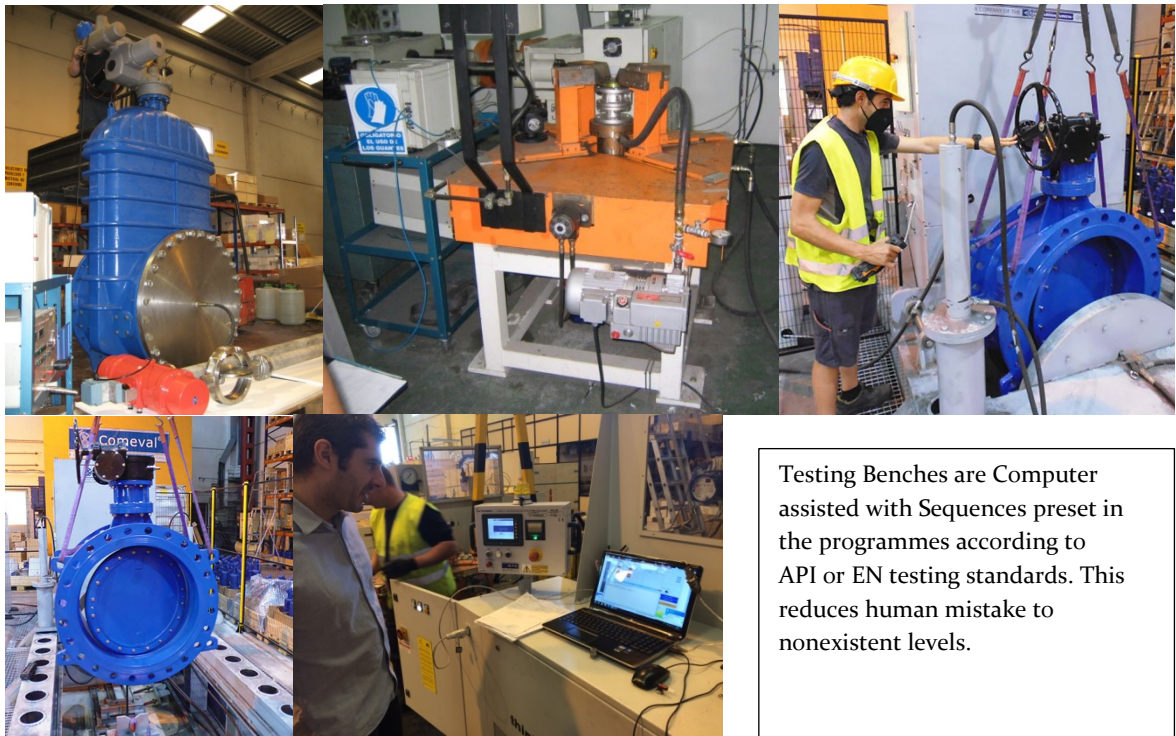
As functional tests we are meeting compliance with the following applicable standards:

- EN 12266-1
- API 598

These above standards govern the level criteria of time / testing pressure and media to be applied on the finished valve before dispatch.

The two major standardised tests are Hydro and Leakage tests, each one determining the tightness at atmospheric or sealing level.

Hydro and Leakage Tests are carried out at our facilities through automated 70 Ton computerized testing benches with clamping capacity for valves up to 42" / DN 1050; for larger valves the testing equipment is consisting of blind flanges bolted at one side and powered by the bench pumping group. Pressure testing up to 500 bar up to 12"/DN300 and up to 300bar for 14" to 42"/DN350 to DN1050.



Testing Benches are Computer assisted with Sequences preset in the programmes according to API or EN testing standards. This reduces human mistake to nonexistent levels.

A comprehensive range of Visual and Non Destructive Examinations and QC activities are performed at our facilities by our trained personnel being the most common ones the following:

- LPT
- MPI
- Sparkling Tests (Dielectric)
- FE

The range of visual, functional and NDT's are put together in our Inspection & Tests Plan Sheets when a third party or end customer control is required. It is coded within our QA System.

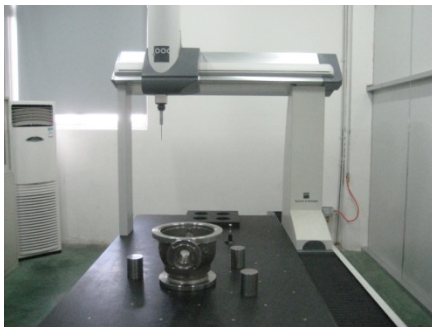
The tests are subject to third party inspection at the request of the Customer Order.

All testing equipment is annually calibrated and certified by Independent Notify Bodies according to the QA System Procedures.

A typical I&TP format is enclosed in the annexes to this Vendors File for reference.



Other external special tests are also subcontracted with independent laboratories and technical Institutes and are comprehensive of ultrasonic tests, radiographic tests, mechanical and chemical tests, fire safe tests, migration tests, Seismic Tests and other under agreement.



The use of 3D precision measurement machinery is subcontracted at technical laboratories for the correct dimensional design / manufacturing drawings of major parts. Our design and development department holds a list of subcontractors at this aim.

4.7 Preservation and packing for shipment

The valves are preserved for storage and transportation to site according to our packing procedures established in the QA System.

The packing is compliant with ISPM 15 international standards and arranged in our facilities.



Copies of Packing Procedures are available under request. Not included in this VF.

4.8 Aftermarket & Plant Service

COMEVAL VALVE SYSTEMS perform aftermarket services with own personnel to proceed on and off site with multidisciplinary activities as described below.



- Original spare parts service for all our products.
- Workshop repair of our products, including testing and final coating. Repairs are performed with special equipment and skilled personnel comprising correction, adjustment, leak sealing, actuator and control accessories review, resetting of safety valves and automation.
- On-site support: resetting of valves, actuator assembly, adjustments of actuators and control accessories, leak sealing, detection of steam leakage and technical support.
- Assembling and changing valves: shaft extensions, assembling actuators, control accessories, valve ends modification, drill flanges, various machining processes and other specialised activities.
- Degreasing for oxygen service, silicone removal, superficial treatments and special coatings.
- Operational assistance, assistance in maintenance shutdowns and assembly guidance.

Scope of service operations is international – refer to terms and conditions.

Standard guarantee coverage of CVS stands for 12 months after plant commissioning or 18 months after delivery whatever earlier occurs. Especial agreements for guarantee extensions are available on demand.

5. Registered Brands

The excellence of design leads to high quality products at appealing price level thus enjoying a growing reputation in international markets, This is the essence of our range of private labels, UNIFLOW®, DIAVAL®, UNIWAT®, TORAFLEX®, a winning team at today's demanding markets.

Uniwat® Uniflow®
Diaval® Toraflex®



PATENTED BRANDS:

The COMEVAL VALVE SYSTEMS brands are protected against third party unauthorized use in the EU Registration of brands under the following filing:

DIAVAL® n° 003567831 Class #6

UNIWAT® n° 014493274 Class #6

UNIFLOW® n° 014493316 Class# 6

TORAFLEX® n° 001449332 Class #6

For more information about our brands see Annex 8.8 Certificate of Registration

6. Product Range

Our manufactured products are based on our own designs, always at the avant-garde of the technology and the knowledge on hydrodynamics. The manufacture of our products is organized under serialized production, fulfilling the objective of making products against stock. This makes possible to combine the advantages of a manufacturer and a stockist company in a single one, thus having our own designed products at our stock shelves for fast delivery.

Special products such as those of extremely large size or non-standard designs are also part of our range as part of our service philosophy. Our production is quite flexible and can accommodate the manufacture of special products in small quantities; our production centres have their own fast modeling units to cover these needs.

The COMEVAL VALVE SYSTEMS portfolio of manufactured products is listed as below table with brand, product description and target market segments:

BRAND	Products	Key Segments
UNIWAT®	RSG valves, Check valves, Butterfly valves, Strainers	WATER, HVAC
UNIFLOW®	Metal seated GGC valves, Ball valves, Strainers	INDUSTRY
DIAVAL®	Diaphragm valves	INDUSTRY
TORAFLEX®	Expansion joints	HVAC, MARINE

DIAVAL® - Diaphragm Valves

DIAVAL® range of Diaphragm Valves is the answer to any process engineer search for versatile products featured by a multiple choice of lining materials and rubber grade diaphragms suiting virtually any corrosion and abrasion application in the process industry. The valves are featured by their rugged design, competitiveness and large availability of materials, connections and standards.. DIAVAL® products are PED 2014/68/EU (PED 97/23/EC) approved.



Valve design: EN 13397, EN 12516
Face to face length: EN 558 Series 1 (DIN 3202F1) or EN 558 Series 7 (BS 5156)
Valve end connections: - Flanged to EN 1092-2 type 21/B, PN10/16 (DN15-150)*; PN10 (DN200-300) *(valves DN65 with 4 holes as accepted variant in standard) option drilling to ASA150#
- Female threaded ends to ISO 228-1 (DIN 259-BSPP)
Marking: EN 19 / Pressure Tests: EN 12266-1
Seat leakage rate: Rate A (full seat tightness in both directions)
Inside and outside primer paint layer black color for protection during storage and transport
Product compliant with Directive 2014/68/EU on Pressure Equipment (PED) and Machinery Directive

UNIWAT® - Butterfly Valves and Actuators

The UNIWAT range of Butterfly Valves offers a very complete combination of manufacturing styles, end connections and materials to suit applications in Industry, HVAC and Water both manually operated or by actuators.. UNIWAT® butterfly Valves are PED 2014/68/EU (PED 97/23/EC) approved, WRAS approval available on request.



Valve design: EN 593, EN 12516 & DIN 3840.
Nominal Pressure: PN16 (DN25-DN300)/ PN10* (DN350-1200). For PTFE seat PN10 (DN25-1200) * Option PN16 (DN350-1200) /
Face to face length: EN 558 S20 (DIN 3202 K1) SERIES VF700/750/7U0 EN 558 S13 (DIN 3202 F16) SERIES VF790
Valve end connections:
-VF700: Wafer type to be installed between welding neck flanges EN 1092-1/2 type 11/B
DN25-600: PN10/16 and ASME B16.5 ASA 150 flanges;
DN700-1200: PN10, option PN16;
-VF750 Lug type to be installed between welding neck flanges EN 1092-1/2 type 11/B
PN16 (DN25-300); PN10 (DN350-600), option PN16 (DN350-600)
-VF7U0 Flanged to EN 1092-1/2 type 11/B
PN16(DN150-300); PN10 (DN350-1200), option PN16 (DN350-1200)
-VF790 Flanged to EN 1092-1/2 type 11/B
PN16 (DN50-300); PN10 (DN350-1200) / Top flange: ISO 5211 / Marking: EN 19 /Pressure Tests: EN 12266-1 / Seat leakage rate:
Rate A (full seat tightness in both directions)
Outside epoxy coating protection blue color similar to RAL5002. Min. average thickness 150 microns
Product compliant with Directive 2014/68/EU on Pressure Equipment (PED) and Machinery Directive 2006/42/EC
WRAS Approval for VF700/VF750 DN25-DN300

UNIWAT® - Water Works Line

The UNIWAT range of unique products conforms a comprehensive portfolio to suit many water control applications in the segments of sewage, irrigation and water ducts. UNIWAT® products are PED 2014/68/EU (PED 97/23/EC) approved WRAS approval available on request.



Check Valves:

They are unidirectional valves opening with the fluid and close in the opposite direction (observe the Operating and Maintenance Instructions). There is some diverse sort of check valves categorized by their design as follows:

1. Swing Check valves
2. Tilting Check Valves
3. Silent Check Valves
4. Dual Plate Check Valves
5. Spring loaded check valves
6. Ball Check Valves
7. Diaphragm check Valves
8. Piston type Check Valves
9. Flap Check Valves

Strainers:

Y-Strainers PN16 with perforated basket for mechanically removing solids from flowing media and protecting equipment. Basket replaceable in line and drain plug. Epoxy coating internal and external.

Specification of the range:

Diverse design combinations by materials of construction, nominal size range (DN15-DN600) and filtration passage.

UNIFLOW® - Metal Seated Valves, Ball Valves and Strainers

UNIFLOW® metal seated Valves mean a very comprehensive portfolio of valves both in ANSI / EN standards of design and manufacture. Products with the highest standard of quality and inspection criteria feature UNIFLOW as the ideal choice for distributors in the market place both on day to day sales or project based operations. UNIFLOW® Valves are approved in conformity with PED 2014/68/EU (PED 97/23/EC) Module H.



Design: API 600 or API 6D ; DIN EN 1984 ; EN 13709

Pressure Rating: 150/300/600/900/1500/2500# ; PN16/25/40/63/100

Face to face length: ASME B16.10 ; DIN 3202 F5/F7

Valve end connections: Flanged RF or RTJ to ASME B16.5 Welded BW to ASME B16.25 ; RF to EN 1092-1 Type 21 Welded BW to EN12627

Marking: MSS SP-25

Inspections & Tests: API 598 ; EN12266-1/2 Bidirectional design

Primer painted for protection during storage and transport (carbon steel body/bonnet)

Product compliant with Directive 2014/68/EU on Pressure Equipment (PED) and Machinery Directive 2006/42/EC for European Union territory

TORAFLEX® - Rubber Joints and Metal Expansion Compensators

TORAFLEX® Rubber Joints are manufactured in our steam vulcanizing presses using high quality synthetic rubber compounds from reputed brands. The diverse rubber grades and bellows configuration are prepared to suit most of applications in the process industry. Our engineering department can provide advice on structural supporting anchors and installation. Quality is ensured on all TORAFLEX® products throughout a severe control in all production steps.



Nominal Pressure: PN10 / PN16

Valve end connections: Loose flanges drilled to EN 1092-1 PN10, PN16, or ASME B16.5 ASA150

Marking: EN 19

Pressure Tests: EN 12266-1 Rubber Joints are excluded from the Pressure Equipment Directive 2014/68/EU (PED), according to its article 1.2(O)

WRAS Approval for DN15-DN40

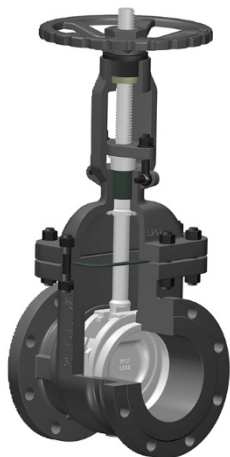
Comprehensive engineering catalogues are available at the end of this Vendors File



API / EN Industrial Valves

Gate Valves Series 90, 91, 92, 94, 33

2" - 48" / DN50 - DN1200 / Class 150-2500 / PN16-420 / Connections RF, RTJ, BW / Standard Design: API 600 / API 6D / ASME B16.34 /



Standard Features:

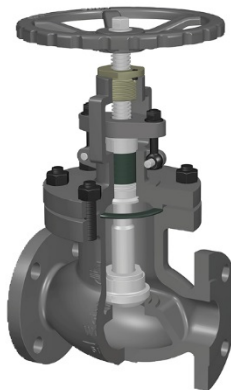
- Metal seated, bidirectional
- OS&Y, pressure seal design for high ratings
- Rising stem
- Back seating design
- Flexible wedge
- Threaded, welded or integral seat
- Operation by handwheel or gear

Options:

- Non-rising stem
- Solid wedge
- Top arrangement for actuator assembly
- Pneumatic, electric or hydraulic actuation
- Lock device, chainwheel
- Position indicator, limit switches
- Packing with lantern ring
- Live load packing
- Bypass line, drain device available
- Extended bonnet and stem for cryogenic application
- Jacketed body
- Vacuum service design
- Manufacturing to NACE MR0175
- Special execution for outdoors/corrosive atmosphere, high temperature service, etc.

Globe Valves Series 80, 81, 82, 83, 84, 85, 86

2" - 24" / DN50 - DN600 / Class 150-2500 / PN16-420 / Connections RF, RTJ, BW / Standard Design: BS 1873 / ASME B16.34 /



Standard Features:

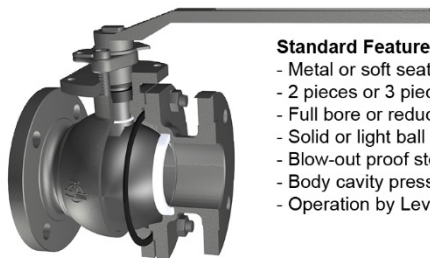
- Metal seated, unidirectional
- OS&Y, pressure seal design for high ratings
- Non-rising stem and handwheel
- Back seating design
- Threaded, welded or integral seat
- Operation by handwheel or gear

Options:

- Rising stem and handwheel
- Parabolic plug for throttling/regulating function
- Top arrangement for actuator assembly
- Pneumatic, electric or hydraulic actuation
- Lock device, chainwheel
- Position indicator, limit switches
- Packing with lantern ring
- Live load packing
- Bypass line, drain device available
- Jacketed body
- Extended bonnet and stem for cryogenic application
- Vacuum service design
- Manufacturing to NACE MR0175
- Special execution for outdoors/corrosive atmosphere, high temperature service, etc.

Ball Valves Series BV BF

3/8" - 10" / DN10 - DN250 / Class 150-600 / PN16-100 / Connections RF, RTJ, BW / Standard Design: API 6D / ASME B16.34 /



Standard Features:

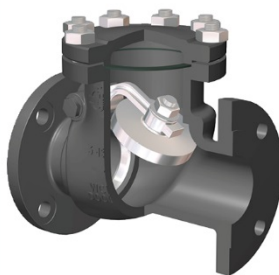
- Metal or soft seated, bidirectional
- 2 pieces or 3 pieces body
- Full bore or reduced bore
- Solid or light ball
- Blow-out proof stem
- Body cavity pressure relief
- Operation by Lever or Worm Gear

Options:

- Anti-static design
- Drain and vent connections
- Injection sealing
- Top arrangement to ISO 5211 for actuator assembly
- Lock device, chainwheel
- Position indicator, limit switches
- Live load packing
- Bypass line
- Jacketed body
- Underground application structure available
- Cryogenic design, vacuum service design
- NACE MR0175 design
- Fire safe design to API 6FA
- Special execution for outdoors/corrosive atmosphere, high temperature service, etc.
- Fully welded construction

Check Valves Series 3S, 3I

2" - 36" / DN50 - DN900 / Class 150-2500 / PN16-420 / Connections RF, RTJ, BW / Standard Design: API 6D / ASME B16.34 /



Standard Features:

- Metal seated
- Pressure seal design for high ratings
- Full bore design

Options:

- Counterweight and hydraulic
- Tilting design
- Jacketed body
- Special execution for outdoors/corrosive atmosphere, high temperature service, etc.

Check Valves Series DP

2" - 48" / DN50 - DN1200 / Class 150-600 / PN10-100 / Connections RF / Standard Design: API 594



Standard Features:

- Retainless design
- Metal seated

Options:

- Special execution for outdoors/corrosive atmosphere, high temperature service, etc.



* Other UNIFLOW products: Strainers and Plug Valves



Diaphragm Valves

Weir type - Threaded

DN10 - DN80 / PN10-16 / Threaded ends to BSP (BS 21 parallel or taper), NPT (ANSI B1.20.1) / Marking: EN19 / Pressure Tests: EN12266-1



Standard Features:

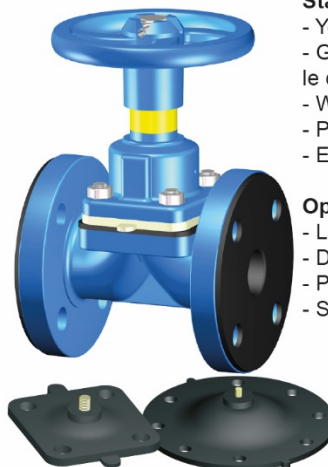
- Closure Diaphragms
- Grease reservoir integrated in the spindle chamber
- Yellow position indicator
- Witness hole
- Precise compressor plate
- Ergonomic handwheel

Options:

- Limit switches
- Different actuation
- Padlocking or handwheel hood
- Special sealed bonnet

Weir type - Flanged

DN15 - DN300 / PN4-16 / Flanged to EN1092-2 type 21/B, PN10/16 / Marking: EN19 / Pressure Tests: EN12266-1



Standard Features:

- Yellow position indicator
- Grease reservoir integrated in the spindle chamber
- Witness hole
- Precise compressor plate
- Ergonomic handwheel

Options:

- Limit switches
- Different actuation
- Padlocking or handwheel hood
- Special sealed bonnet

Straight Through - Flanged

DN15 - DN300 / PN3,5-10 / Flanged to EN1092-2 type 21/B, PN10/16 / Marking: EN19 / Pressure Tests: EN12266-1



Standard Features:

- Yellow position indicator
- Grease reservoir integrated in the spindle chamber
- Witness hole
- Closure Diaphragms
- Precise compressor plate
- Ergonomic handwheel

Options:

- Different connections
- Limit switches
- Different actuation
- Padlocking or handwheel hood
- Special sealed bonnet

Weir and Straight Through type - with Pneumatic Actuator

DN15 - DN300 / Visual and Functional Tests: EN12266-1



Standard Features:

- Grease reservoir integrated in the spindle chamber
- Rolling diaphragm design
- Single acting (Direct and reverse actions)
- Visual position indicator
- Burnished stem protected by bellow.
- Maintenance-free O-ring sealing with flexible guiding

Options:

- Assembly of additional accessories: limit switches, proximity sensors, solenoid valves, air speed regulators, positioners...
- Top mounted emergency handwheels for manual operation.





Rubber Expansion Joints

S10 Single sphere Expansion Joints

DN25 - DN1200 / PN10-16 / Flanged to EN1092-2 type 21/B, PN10/16 / Marking: EN19 / Pressure Tests: EN12266-1



- Loose flanges for easy assembly.
- Precision injection molded of synthetic rubber and nylon.
- 4 different allowable movements: axial compression and expansion, lateral and angular deflection.
- Outer layer protects the bellows surface from eventual ozone attack.
- Spherical design for better strength and efficiency.
- WRAS approval.

S15 Single sphere Expansion joint, single length

DN25 - DN300 / PN10-16 / Flanged to EN1092-2 type 21/B, PN10/16 / Marking: EN19 / Pressure Tests: EN12266-1



- Loose flanges for easy assembly.
- Precision injection molded of synthetic rubber and nylon.
- 4 different allowable movements: axial compression and expansion, lateral and angular deflection.
- Outer layer protects the bellows surface from eventual ozone attack.
- Spherical design for better strength and efficiency.
- WRAS approval.

S20 Double sphere Expansion Joints

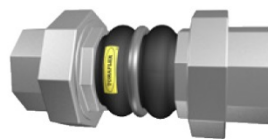
DN25 - DN600 / PN10-16 / Flanged to EN1092-2 type 21/B, PN10/16 / Marking: EN19 / Pressure Tests: EN12266-1



- Loose flanges for easy assembly.
- Precision injection molded of synthetic rubber and nylon.
- 4 different allowable movements: axial compression and expansion, lateral and angular deflection.
- Outer layer protects the bellows surface from eventual ozone attack.
- Spherical design for better strength and efficiency.
- Double sphere design allows greater axial, lateral and angular movements subject to less effort and material wearing down during movements.
- With optional root ring.
- WRAS approval.

S30 Threaded unions Expansion Joints

DN25 - DN1200 / PN10-16 / Threaded to EN10266-1, GAS-Rp-BSP/ Marking: EN19 / Pressure Tests: EN12266-1



- Light and easy to install.
- Precision injection molded of synthetic rubber and nylon.
- Outer layer protects the bellows surface from eventual ozone attack.
- Spherical design for better strength and efficiency.
- Double sphere design allows greater axial, lateral and angular movements subject to less effort and material wearing down during movements.
- With root ring as standard.
- WRAS approval.



* Other TORAFLEX products: Metal Compensators S500



Butterfly valves

Series VF700 Wafer Style Centric Butterfly Valves

DN 25/1200 – PN 10/16 or ASA150 – ISO 5211 – Marking EN 19 –
Pressure Tests: EN 12266-1



Materials of Construction Body and Disc: EN-JL1040 (GG25), EN-JS1030 (GGG40), St. Steel CF8M, ASTM A216 WCB

Materials of seat liner: EPDM, NBR, VITON, Silicon, PTFE...

Actuation: Notch lever, Worm Gear, Actuators

Standard Paint: Epoxy powder paint

Options:

- WRAS approval & compliance with EN1171, EN 10704-1/2
- Silicone free execution
- Extended spindle
- Operation locking device
- Limit switches

Series VF750 Lug Style Centric Butterfly Valves

DN 25/1000 – PN 10/16 or ASA150 – ISO 5211 – Marking EN 19 –
Pressure Tests: EN 12266-1



Materials of Construction Body and Disc: EN-JL1040 (GG25), EN-JS1030 (GGG40), St. Steel CF8M, ASTM A216 WCB

Materials of seat liner: EPDM, NBR, VITON, Silicon, PTFE...

Actuation: Notch lever, Worm Gear, Actuators

Standard Paint: Epoxy powder paint

Options:

- WRAS approval & compliance with EN1171, EN 10704-1/2
- Silicone free execution
- Extended spindle
- Operation locking device
- Limit switches

Series VF7U0 Double Flange U-Type Butterfly Valves

DN 150/1200 – PN 10/16 or ASA150 – ISO 5211 – Marking EN 19 –
Pressure Tests: EN 12266-1



Materials of Construction Body and Disc: EN-JL1040 (GG25), EN-JS1030 (GGG40), St. Steel CF8M, ASTM A216 WCB

Materials of seat liner: EPDM, NBR, VITON, Silicon, PTFE...

Actuation: Notch lever, Worm Gear, Actuators

Standard Paint: Epoxy powder paint

Options:

- WRAS approval & compliance with EN1171, EN 10704-1/2
- Silicone free execution
- Extended spindle
- Operation locking device
- Limit switches

Series VF791 Double Flange Double Eccentric Butterfly Valves

DN 100/1200 – PN 10/16 – ISO 5211 – Flanges EN1092-2 type 21/B, PN16 – Marking EN 19 – Pressure Tests: EN 12266-1



Materials of Construction Body and Disc: EN-JS1030 (GGG40), St. Steel CF8M, ASTM A216 WCB

Materials of sealing ring: EPDM, NBR, VITON, Hypalon, Heat EPDM...

Actuation: Worm Gear, Actuators

Standard Paint: Epoxy powder paint

Options:

- Drinking water approvals
- Higher service pressure rating and temperatures
- Other connections
- Limit switches





Gate, Check Valves and Strainers

Resilient Seated Gate Valves - SERIES 504/505/507

DN40 - DN1000 / PN10-16 / Flanged to EN1092-2 type 21/B, PN16 /
Marking: EN19 / Pressure Tests: EN12266-1



Standard Features:

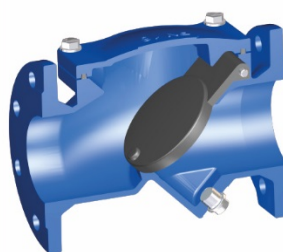
- Triple O-ring stem
- Non rising stem (504/505) rising stem (507)
- Removable bushing
- Full bore
- Rubber wedge
- Round rubber gasket on recess in bonnet
- Epoxy coat

Options:

- WRAS approval & compliance with EN 1171, EN 10704-1/2
- Higher service temperatures
- Limit switches
- Different actuation
- Lock device, chainwheel

Flex Swing Check Valves - SERIES 5107

DN50 - DN600 / PN10-16 / Flanged to EN1092-2 type 21/B, PN10/16 /
Marking: EN19 / Pressure Tests: EN12266-1



Standard Features:

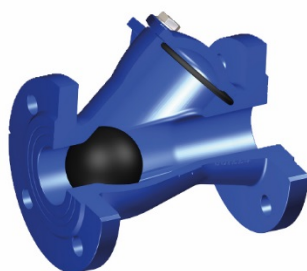
- Rubber lined on disc
- Drainage screw
- Internal parts can easily be reached and replaced in line without special tools
- Epoxy coat

Options:

- Other designs and approvals

Resilient Seated Check Valves - SERIES 3240/3141

DN32 - DN300 / PN10-16 / Flanged to EN1092-2 type 21/B, PN10/16 /
Female thread to ISO 228-1 (DIN259-BSPP) / Marking: EN19 / Pressure Tests: EN12266-1



Standard Features:

- Callibrated rubber lined ball
- Bolting in St. Steel
- Unobstructed full bore, self cleaning
- Epoxy coat

Options:

- Drinking water approval & compliance with EN 10704-3

Y and T Strainers - SERIES 630W

DN15 - DN600 / PN16 / Flanged to EN1092-2 type 21/B / Marking:
EN19 / Pressure Tests: EN12266-1



Standard Features:

- Ample body design
- Drainage plug
- Bolted cover
- Bolting in St. Steel
- Rugged stainless steel perforated basket
- Epoxy coat

Options:

- Drinking water approval
- Higher service temperatures
- Special basket for vacuum service



* Other complementary products: Pilot Operated Control Valves, Air valves, Pressure Regulators, Float Valves and Dismantling Joints.

7.2 Product certifications and approvals

All our manufacturing and distribution products are legalized in conformity with the **Pressure Equipment Directive (PED)** thus ensuring the strictest compliance with Quality and Safety. Our products suited for the Water Works Systems are approved under Module A (up to category 1), many of them with **WRAS** approval for drinking water, whereas those designed for more demanding services are approved through the restrictive Module H (up to category III) and certified by a Third Party. Other European Directives such as Machinery Directive, ATEX, etc. are fulfilled when required.

Our manufacturing products are also **EAC** certified to CU TR 010/2011 and CU TR 032/2013 for their use in the Eurasian Economic Union (former Customs Union): Russia, Belarus, Kazakhstan, Armenia and Kirghizstan.

We have **Fire Safe** test certificates according to API6FA covering most of our ball valves, and perform **Fugitive Emission Tests** according to ISO15848-1/2 (TA-Lüft) on diverse valve types, witnessed and certified by third parties when required.





EU CERTIFICATE OF CONFORMITY

In accordance with the requirements of the Pressure Equipment Directive 2014/68/EU

This is to certify that the Quality Management System of:

COMEVAL VALVE SYSTEMS, S.L. y CIA, Soc. Comandataria
Les Rotes, 15 P.I. EL PUIG
46540 EL PUIG (Valencia) Spain

has been assessed against the requirements of Annex III, Module H of the Pressure Equipment Directive 2014/68/EU and conforms to the requirements for the products shown below:

Design and Manufacture of Gate Valves, Globe Valves, Check Valves, Ball Valves and Strainers
(See attached schedule)

Approval is subject to the continued maintenance of the quality system in accordance with the requirements of the above Directive for the products listed on the attached schedule.

Authorisation is hereby given to use the LRE Notified Body Identification Number in accordance with the requirements of the specified Directive in relation to the products as identified above.

Certificate No: 0094/PED/MAD/ 0146 ENG

Original Approval: 31 December 2020

Current Certificate: 05 February 2021

Certificate Expiry: 04 February 2024

LRE Notified Body Number 0094



Cristel López, Decision Maker

Lloyd's Register España, S.A. is a company registered in R. M. de Madrid, al Tomo 5218 general, 4358, de la Sec. 3.ª del Libro de Sociedades, folio 133; hoja n.º 41397, Inscrp. 1.ª - C.I.F. - A28591287
Registered office: C/Princesa 29, 1.ª, 28008 Madrid

Lloyd's Register Group Limited, its affiliates and subsidiaries and their respective officers, employees or agents are, individually and collectively, referred to in this clause as the 'Lloyd's Register'. Lloyd's Register assumes no responsibility and shall not be liable to any person for any loss, damage or expense caused by reliance on the information or advice in this document or howsoever provided, unless that person has signed a contract with the relevant Lloyd's Register entity for the provision of this information or advice and in that case any responsibility or liability is exclusively on the terms and conditions set out in that contract.

0094-PED-module-H-template_R0-Feb20_ENG

This is a copy of an electronic document. In the event of any conflict or ambiguity between the copy and the electronic document, which is retained and published by Lloyd's Register, the original electronic and certified version shall always prevail.

Equipment and Protective Systems Intended for use in Potentially Explosive Atmospheres Directive



EU TECHNICAL FILE RECEIPT

This is to certify that Lloyd's Register Verification, a Notified Body under the terms of the 'Equipment and Protective Systems Intended for use in Potentially Explosive Atmospheres Directive', 2014/34/EU, has, in conformity with the requirements of the Conformity Assessment Procedure as described within Article 13 item 1b (ii) of the Directive, received for retention a Technical File as detailed below;

This receipt is issued to:

APPLICANT: **COMEVAL VALVE SYSTEMS, S.L. y CIA, Soc. Comandataria**
Les Rotes, 15 P.I. EL PUIG
46540 EL PUIG (Valencia) España

TECHNICAL FILE DESCRIPTION:

Product Type	Series
Butterfly Valves UNIWAT	VF_
Swing Check Valves UNIWAT	CV_
Diaphragm Valves DIAVAL	W_ / S_
Y-Strainers UNIFLOW	630N_ / 821N_ / 900_
Metal Expansion Compensators TORAFLEX	S25_ / S50_
Y-Strainers UNIFLOW	F_ / 629_ / 955_
Globe Valves UNIFLOW	8_
Gate Valves UNIFLOW	9_
Ball Valves UNIFLOW	B_
Swing Check Valves UNIFLOW	3_
Piston (Lift Disc) Check Valves UNIFLOW	3_
Disk Check Valves UNIFLOW	D_
Dual Plate Check Valves UNIFLOW	D_

TECHNICAL FILE REFERENCE: COMEVAL informe técnico idoneidad ATEX rev.0 23 febrero 2018

The file will be stored for an initial period of ten years from date of receipt. The applicant will be contacted after ten years and the file will be either returned or destroyed, or a new retention agreement established, as applicable.

This receipt must be produced by the manufacturer to reclaim the stored technical file.

Storage No: 0038/ATEX/MAD/0014

Date of Receipt: 26 February 2018

LRV Notified Body Number 0038






Teresa Souto on behalf of Lloyd's Register Verification Ltd.




Lloyd's Register Verification Limited (Reg. no. 4929226) is a limited company registered in England and Wales. Registered office: 71 Fenchurch Street, London, EC3M 4BS, UK. A subsidiary of Lloyd's Register Group Limited.




Lloyd's Register Group Limited, its affiliates and subsidiaries and their respective officers, employees or agents are, individually and collectively, referred to in this clause as the 'Lloyd's Register'. Lloyd's Register assumes no responsibility and shall not be liable to any person for any loss, damage or expense caused by reliance on the information or advice in this document or howsoever provided, unless that person has signed a contract with the relevant Lloyd's Register entity for the provision of this information or advice and in that case any responsibility or liability is exclusively on the terms and conditions set out in that contract.




IMS03-04-xxxx Appendix This is a copy of an electronic document. In the event of any conflict or ambiguity between the copy and the electronic document, which is retained and published by Lloyd's Register, the original electronic and certified version shall always prevail.

PED Pressure Equipment Directive 2014/68/EU – Module A

	COMEVAL VALVE SYSTEMS, S.L. y CIA., Soc. Comanditaria Les Rotes 15 (Poligono Industrial El Puig) 46540 EL PUIG (Valencia) SPAIN																	
EU DECLARATION OF CONFORMITY in accordance with Pressure Equipment Directives 2014/68/EU																		
COMEVAL VALVE SYSTEMS, S.L. y CIA., Soc. Comanditaria, as manufacturer, declares that this Declaration is issued under its sole responsibility and belongs to the following product range:																		
<table border="1"><thead><tr><th>Product</th><th>Brand</th></tr></thead><tbody><tr><td>Gate Valves</td><td>UNIWAL™</td></tr><tr><td>Series</td><td>Batch No.</td></tr><tr><td>304, 307</td><td>20</td></tr><tr><td>Nominal pressure</td><td>Nominal Size</td></tr><tr><td>PN16, PN10, PN16, PN25</td><td>DN40-1000</td></tr><tr><td colspan="2">Relevant Standards</td></tr><tr><td colspan="2">EN 12216-2/A, DIN 3840, EN 1092-2, EN 336-1</td></tr></tbody></table>	Product	Brand	Gate Valves	UNIWAL™	Series	Batch No.	304, 307	20	Nominal pressure	Nominal Size	PN16, PN10, PN16, PN25	DN40-1000	Relevant Standards		EN 12216-2/A, DIN 3840, EN 1092-2, EN 336-1			
Product	Brand																	
Gate Valves	UNIWAL™																	
Series	Batch No.																	
304, 307	20																	
Nominal pressure	Nominal Size																	
PN16, PN10, PN16, PN25	DN40-1000																	
Relevant Standards																		
EN 12216-2/A, DIN 3840, EN 1092-2, EN 336-1																		
The product range described above is in conformity with the relevant European Union harmonization legislation: Directive 2014/68/EU. These products are classified up to Category I, Annex II table 9 (liquids of group 2), in conformance with the prescriptions of the Annex II Module A of these Directives																		
DECLARATION OF INCORPORATION OF PARTLY COMPLETED MACHINERY in accordance with Machinery Directive 2006/42/EC																		
COMEVAL VALVE SYSTEMS, S.L. y CIA., Soc. Comanditaria, as manufacturer, declares that this Declaration is issued under its sole responsibility and belongs to the above defined product range.																		
These products are considered as partly completed machinery when delivered by COMEVAL intended and ready to be assembled with electric, pneumatic and hydraulic thrust actuators, being in such a case in conformity with the relevant requirements of the Union harmonization legislation, Directive 2006/42/EC, acc. to its Annex I, Articles 1.1.2, 1.1.3, 1.1.5, 1.2.1, 1.3.1, 1.3.2, 1.3.4, 1.3.7, 1.3.9, 1.5.2, 1.5.4, 1.5.5, 1.5.6, 1.5.7, 1.6.1, 1.7.1, 1.7.2, 1.7.3, 1.7.4.																		
The product must not be put into service until the final machinery, into which it is to be incorporated, has been declared in conformity with the provisions of the Directive 2006/42/EC.																		
COMEVAL commits to submitting the relevant information on the partly completed machinery to the national competent authority via electronic transmission upon request. The relevant technical documentation pertaining to the machinery described in Annex VII, part B has been prepared.																		
Authorised person for documentation: Javier Galán																		
Document signed for and on behalf of COMEVAL VALVE SYSTEMS, S.L. y CIA., Soc. Comanditaria, in El Puig – Valencia (Spain), on February 24, 2020																		
 Enrique Bort Managing director																		
The Declaration certifies the conformity with the mentioned Directives, it does not contain any warranty of properties in the sense of the product liability law, however. The safety hints of the product information supplied with the product must be observed. In case of a modification of the product not agreed with the manufacturer or of non-observance of the safety hints this Declaration loses its validity. gate_valves-304_307-unival-declaration_of_conformity-en-dc01.docx																		

	COMEVAL VALVE SYSTEMS, S.L. y CIA., Soc. Comanditaria Les Rotes 15 (Poligono Industrial El Puig) 46540 EL PUIG (Valencia) SPAIN																	
EU DECLARATION OF CONFORMITY in accordance with Pressure Equipment Directives 2014/68/EU																		
COMEVAL VALVE SYSTEMS, S.L. y CIA., Soc. Comanditaria, as manufacturer, declares that this Declaration is issued under its sole responsibility and belongs to the following product range:																		
<table border="1"><thead><tr><th>Product</th><th>Brand</th></tr></thead><tbody><tr><td>Butterfly Valves</td><td>UNIWAL™</td></tr><tr><td>Series</td><td>Batch No.</td></tr><tr><td>VF700, VF750, VF700, VF750, VF700, VF750</td><td>20</td></tr><tr><td>Nominal pressure</td><td>Nominal Size</td></tr><tr><td>PN10, PN16</td><td>DN25-1200</td></tr><tr><td colspan="2">Relevant Standards</td></tr><tr><td colspan="2">EN 583, EN 12216-2/A, DIN 3840</td></tr></tbody></table>	Product	Brand	Butterfly Valves	UNIWAL™	Series	Batch No.	VF700, VF750, VF700, VF750, VF700, VF750	20	Nominal pressure	Nominal Size	PN10, PN16	DN25-1200	Relevant Standards		EN 583, EN 12216-2/A, DIN 3840			
Product	Brand																	
Butterfly Valves	UNIWAL™																	
Series	Batch No.																	
VF700, VF750, VF700, VF750, VF700, VF750	20																	
Nominal pressure	Nominal Size																	
PN10, PN16	DN25-1200																	
Relevant Standards																		
EN 583, EN 12216-2/A, DIN 3840																		
The product range described above is in conformity with the relevant European Union harmonization legislation: Directive 2014/68/EU. These products are classified up to Category I, Annex II table 9 (liquids of group 2), in conformance with the prescriptions of the Annex III Module A of these Directives																		
DECLARATION OF INCORPORATION OF PARTLY COMPLETED MACHINERY in accordance with Machinery Directive 2006/42/EC																		
COMEVAL VALVE SYSTEMS, S.L. y CIA., Soc. Comanditaria, as manufacturer, declares that this Declaration is issued under its sole responsibility and belongs to the above defined product range.																		
These products are considered as partly completed machinery when delivered by COMEVAL intended and ready to be assembled with electric, pneumatic and hydraulic thrust actuators, being in such a case in conformity with the relevant requirements of the Union harmonization legislation, Directive 2006/42/EC, acc. to its Annex I, Articles 1.1.2, 1.1.3, 1.1.5, 1.2.1, 1.3.1, 1.3.2, 1.3.4, 1.3.7, 1.3.9, 1.5.2, 1.5.4, 1.5.5, 1.5.6, 1.5.7, 1.6.1, 1.7.1, 1.7.2, 1.7.3, 1.7.4.																		
The product must not be put into service until the final machinery, into which it is to be incorporated, has been declared in conformity with the provisions of the Directive 2006/42/EC.																		
COMEVAL commits to submitting the relevant information on the partly completed machinery to the national competent authority via electronic transmission upon request. The relevant technical documentation pertaining to the machinery described in Annex VII, part B has been prepared.																		
Authorised person for documentation: Javier Galán																		
Document signed for and on behalf of COMEVAL VALVE SYSTEMS, S.L. y CIA., Soc. Comanditaria, in El Puig – Valencia (Spain), on February 24, 2020																		
 Enrique Bort Managing director																		
The Declaration certifies the conformity with the mentioned Directives, it does not contain any warranty of properties in the sense of the product liability law, however. The safety hints of the product information supplied with the product must be observed. In case of a modification of the product not agreed with the manufacturer or of non-observance of the safety hints this Declaration loses its validity. concentric_butterfly_valves-vf700_vf750_vf700_vf750_vf700_vf750-unival-declaration_of_conformity-en-dc02.docx																		

	COMEVAL VALVE SYSTEMS, S.L. y CIA., Soc. Comanditaria Les Rotes 15 (Poligono Industrial El Puig) 46540 EL PUIG (Valencia) SPAIN																	
EU DECLARATION OF CONFORMITY in accordance with Pressure Equipment Directives 2014/68/EU																		
COMEVAL VALVE SYSTEMS, S.L. y CIA., Soc. Comanditaria, as manufacturer, declares that this Declaration is issued under its sole responsibility and belongs to the following product range:																		
<table border="1"><thead><tr><th>Product</th><th>Brand</th></tr></thead><tbody><tr><td>Wafer Dual Plate Check Valves</td><td>UNIWAL™</td></tr><tr><td>Series</td><td>Batch No.</td></tr><tr><td>CH</td><td>20</td></tr><tr><td>Nominal pressure</td><td>Nominal Size</td></tr><tr><td>PN10, PN16</td><td>DN30-600</td></tr><tr><td colspan="2">Relevant Standards</td></tr><tr><td colspan="2">EN 12216-2/A, DIN 3840</td></tr></tbody></table>	Product	Brand	Wafer Dual Plate Check Valves	UNIWAL™	Series	Batch No.	CH	20	Nominal pressure	Nominal Size	PN10, PN16	DN30-600	Relevant Standards		EN 12216-2/A, DIN 3840			
Product	Brand																	
Wafer Dual Plate Check Valves	UNIWAL™																	
Series	Batch No.																	
CH	20																	
Nominal pressure	Nominal Size																	
PN10, PN16	DN30-600																	
Relevant Standards																		
EN 12216-2/A, DIN 3840																		
The product range described above is in conformity with the relevant European Union harmonization legislation: Directive 2014/68/EU. These products are classified up to Category I, Annex II table 9 (liquids of group 2), in conformance with the prescriptions of the Annex II Module A of these Directives																		
Document signed for and on behalf of COMEVAL VALVE SYSTEMS, S.L. y CIA., Soc. Comanditaria, in El Puig – Valencia (Spain), on October 20, 2021																		
 Enrique Bort Managing director																		
The Declaration certifies the conformity with the mentioned Directives, it does not contain any warranty of properties in the sense of the product liability law, however. The safety hints of the product information supplied with the product must be observed. In case of a modification of the product not agreed with the manufacturer or of non-observance of the safety hints this Declaration loses its validity. wafer_dual_plate_check_valves_declaration_of_conformity-ch-unival-certification-en.docx																		

	COMEVAL VALVE SYSTEMS, S.L. y CIA., Soc. Comanditaria Les Rotes 15 (Poligono Industrial El Puig) 46540 EL PUIG (Valencia) SPAIN																	
EU DECLARATION OF CONFORMITY in accordance with Pressure Equipment Directives 2014/68/EU																		
COMEVAL VALVE SYSTEMS, S.L. y CIA., Soc. Comanditaria, as manufacturer, declares that this Declaration is issued under its sole responsibility and belongs to the following product range:																		
<table border="1"><thead><tr><th>Product</th><th>Brand</th></tr></thead><tbody><tr><td>Wafer Swing Check Valves</td><td>UNIWAL™</td></tr><tr><td>Series</td><td>Batch No.</td></tr><tr><td>CV</td><td>20</td></tr><tr><td>Nominal pressure</td><td>Nominal Size</td></tr><tr><td>PN10, PN16</td><td>DN32-600</td></tr><tr><td colspan="2">Relevant Standards</td></tr><tr><td colspan="2">EN 12216-2/A, DIN 3840</td></tr></tbody></table>	Product	Brand	Wafer Swing Check Valves	UNIWAL™	Series	Batch No.	CV	20	Nominal pressure	Nominal Size	PN10, PN16	DN32-600	Relevant Standards		EN 12216-2/A, DIN 3840			
Product	Brand																	
Wafer Swing Check Valves	UNIWAL™																	
Series	Batch No.																	
CV	20																	
Nominal pressure	Nominal Size																	
PN10, PN16	DN32-600																	
Relevant Standards																		
EN 12216-2/A, DIN 3840																		
The product range described above is in conformity with the relevant European Union harmonization legislation: Directive 2014/68/EU. These products are classified up to Category I, Annex II table 9 (liquids of group 2), in conformance with the prescriptions of the Annex III Module A of these Directives																		
Document signed for and on behalf of COMEVAL VALVE SYSTEMS, S.L. y CIA., Soc. Comanditaria, in El Puig – Valencia (Spain), on October 20, 2021																		
 Enrique Bort Managing director																		
The Declaration certifies the conformity with the mentioned Directives, it does not contain any warranty of properties in the sense of the product liability law, however. The safety hints of the product information supplied with the product must be observed. In case of a modification of the product not agreed with the manufacturer or of non-observance of the safety hints this Declaration loses its validity. wafer_swing_check_valves_declaration_of_conformity-cv-unival-certification-en.docx																		

comeval® COMEVAL VALVE SYSTEMS, S.L. y CIA., Soc. Comanditaria
Les Rotes,15 (Poligono Industrial El Puig) 46540 EL PUIG (Valencia) SPAIN

EU DECLARATION OF CONFORMITY
in accordance with Pressure Equipment Directives 2014/68/EU

COMEVAL VALVE SYSTEMS, S.L. y CIA., Soc. Comanditaria, as manufacturer, declares that this Declaration is issued under its sole responsibility and belongs to the following product range:

Product	Brand
Flanged Floating Ball Valves	UNIFLOW®
Series	Batch No.
630W	20
Nominal pressure	Nominal Size
PN16, PN40 / 150W, 300W	DN15-200
Relevant Standards	
EN 12516-3/4, DIN 3840, EN 1092-1, EN 558-1	

The product range described above is in conformity with the relevant European Union harmonization legislation: Directive 2014/68/EU.
These products are classified up to Category I, Annex II table 9 (liquids of group 2), in conformance with the prescriptions of the Annex III Module A of these Directives

DECLARATION OF INCORPORATION OF PARTLY COMPLETED MACHINERY
in accordance with Machinery Directive 2006/42/EC

COMEVAL VALVE SYSTEMS, S.L. y CIA., Soc. Comanditaria, as manufacturer, declares that this Declaration is issued under its sole responsibility and belongs to the above defined product range.

These products are considered as partly completed machinery when delivered by COMEVAL intended and ready to be assembled with electric, pneumatic and hydraulic thrust actuators, being in such a case in conformity with the relevant requirements of the Union harmonization legislation, Directive 2006/42/EC, acc. to its Annex I, Articles 1.1.2, 1.1.3, 1.1.5, 1.2.1, 1.3.1, 1.3.2, 1.3.4, 1.3.7, 1.3.9, 1.5.2, 1.5.4, 1.5.5, 1.5.6, 1.5.7, 1.6.1, 1.7.1, 1.7.2, 1.7.3, 1.7.4.

The product must not be put into service until the final machinery, into which it is to be incorporated, has been declared in conformity with the provisions of the Directive 2006/42/EC.

COMEVAL commits to submitting the relevant information on the partly completed machinery to the national competent authority via electronic transmission upon request. The relevant technical documentation pertaining to the machinery described in Annex VII, part B has been prepared.

Authorised person for documentation: Javier Galán

Document signed for and on behalf of COMEVAL VALVE SYSTEMS, S.L. y CIA., Soc. Comanditaria, in El Puig – Valencia (Spain), on October 20, 2021

Enrique Bort
Managing director

The Declaration certifies the conformity with the mentioned Directives, it does not contain any warranty of properties in the sense of the product liability law, however. The safety hints of the product information supplied with the product must be observed. In case of a modification of the product not agreed with the manufacturer or of non-observance of the safety hints this Declaration loses its validity.
flanged_steel_floating_ball_valves_declaration_of_conformity-bvfm-uniflow-certification-en.docx

comeval® COMEVAL VALVE SYSTEMS, S.L. y CIA., Soc. Comanditaria
Les Rotes,15 (Poligono Industrial El Puig) 46540 EL PUIG (Valencia) SPAIN

EU DECLARATION OF CONFORMITY
in accordance with Pressure Equipment Directives 2014/68/EU

COMEVAL VALVE SYSTEMS, S.L. y CIA., Soc. Comanditaria, as manufacturer, declares that this Declaration is issued under its sole responsibility and belongs to the following product range:

Product	Brand
Ball Check Valves	UNIWAT®
Series	Batch No.
3240, 3441	20
Nominal pressure	Nominal Size
PN10, PN16 (3240) / PN16 (3441)	DN30-300 (3240) / DN32-80 (3441)
Relevant Standards	
EN 12284, EN 12516-3/4, DIN 3840	

The product range described above is in conformity with the relevant European Union harmonization legislation: Directive 2014/68/EU.
These products are classified up to Category I, Annex II table 9 (liquids of group 2), in conformance with the prescriptions of the Annex III Module A of these Directives

Document signed for and on behalf of COMEVAL VALVE SYSTEMS, S.L. y CIA., Soc. Comanditaria, in El Puig – Valencia (Spain), on October 20, 2021

Enrique Bort
Managing director

The Declaration certifies the conformity with the mentioned Directives, it does not contain any warranty of properties in the sense of the product liability law, however. The safety hints of the product information supplied with the product must be observed. In case of a modification of the product not agreed with the manufacturer or of non-observance of the safety hints this Declaration loses its validity.
ball_check_valves_declaration_of_conformity-3240_3441-unival-certification-en.docx

comeval® COMEVAL VALVE SYSTEMS, S.L. y CIA., Soc. Comanditaria
Les Rotes,15 (Poligono Industrial El Puig) 46540 EL PUIG (Valencia) SPAIN

EU DECLARATION OF CONFORMITY
in accordance with Pressure Equipment Directives 2014/68/EU

COMEVAL VALVE SYSTEMS, S.L. y CIA., Soc. Comanditaria, as manufacturer, declares that this Declaration is issued under its sole responsibility and belongs to the following product range:

Product	Brand
Flanged Y-Strainers	UNIWAT®
Series	Batch No.
630W	20
Nominal pressure	Nominal Size
PN16	DN15-600
Relevant Standards	
EN 12516-3/4, DIN 3840, EN 1092-1, EN 558-1	

The product range described above is in conformity with the relevant European Union harmonization legislation: Directive 2014/68/EU.
These products are classified up to Category I, Annex II table 9 (liquids of group 2), in conformance with the prescriptions of the Annex III Module A of these Directives

Document signed for and on behalf of COMEVAL VALVE SYSTEMS, S.L. y CIA., Soc. Comanditaria, in El Puig – Valencia (Spain), on October 20, 2021

Enrique Bort
Managing director

The Declaration certifies the conformity with the mentioned Directives, it does not contain any warranty of properties in the sense of the product liability law, however. The safety hints of the product information supplied with the product must be observed. In case of a modification of the product not agreed with the manufacturer or of non-observance of the safety hints this Declaration loses its validity.
y_strainers_epoxy_coated_declaration_of_conformity-630w-unival-certification-en.docx

comeval® COMEVAL VALVE SYSTEMS, S.L. y CIA., Soc. Comanditaria
Les Rotes,15 (Poligono Industrial El Puig) 46540 EL PUIG (Valencia) SPAIN

EU DECLARATION OF CONFORMITY
in accordance with Pressure Equipment Directives 2014/68/EU

COMEVAL VALVE SYSTEMS, S.L. y CIA., Soc. Comanditaria, as manufacturer, declares that this Declaration is issued under its sole responsibility and belongs to the following product range:

Product	Brand
Double Eccentric Butterfly Valves	UNIWAT®
Series	Batch No.
V791	20
Nominal pressure	Nominal Size
PN16	DN100-1200
Relevant Standards	
EN 558, EN 12516-3/4, DIN3840	

The product range described above is in conformity with the relevant European Union harmonization legislation: Directive 2014/68/EU.
These products are classified up to Category I, Annex II table 9 (liquids of group 2), in conformance with the prescriptions of the Annex III Module A of these Directives

DECLARATION OF INCORPORATION OF PARTLY COMPLETED MACHINERY
in accordance with Machinery Directive 2006/42/EC

COMEVAL VALVE SYSTEMS, S.L. y CIA., Soc. Comanditaria, as manufacturer, declares that this Declaration is issued under its sole responsibility and belongs to the above defined product range.

These products are considered as partly completed machinery when delivered by COMEVAL intended and ready to be assembled with electric, pneumatic and hydraulic thrust actuators, being in such a case in conformity with the relevant requirements of the Union harmonization legislation, Directive 2006/42/EC, acc. to its Annex I, Articles 1.1.2, 1.1.3, 1.1.5, 1.2.1, 1.3.1, 1.3.2, 1.3.4, 1.3.7, 1.3.9, 1.5.2, 1.5.4, 1.5.5, 1.5.6, 1.5.7, 1.6.1, 1.7.1, 1.7.2, 1.7.3, 1.7.4.

The product must not be put into service until the final machinery, into which it is to be incorporated, has been declared in conformity with the provisions of the Directive 2006/42/EC.

COMEVAL commits to submitting the relevant information on the partly completed machinery to the national competent authority via electronic transmission upon request. The relevant technical documentation pertaining to the machinery described in Annex VII, part B has been prepared.

Authorised person for documentation: Javier Galán

Document signed for and on behalf of COMEVAL VALVE SYSTEMS, S.L. y CIA., Soc. Comanditaria, in El Puig – Valencia (Spain), on October 20, 2021

Enrique Bort
Managing director

The Declaration certifies the conformity with the mentioned Directives, it does not contain any warranty of properties in the sense of the product liability law, however. The safety hints of the product information supplied with the product must be observed. In case of a modification of the product not agreed with the manufacturer or of non-observance of the safety hints this Declaration loses its validity.
double_flange_double_eccentric_butterfly_valves_declaration_of_conformity-v791-unival-certification-en.docx



EU DECLARATION OF CONFORMITY

EU DECLARATION OF CONFORMITY
in accordance with Pressure Equipment Directives 2014/68/EU

COMEVAL VALVE SYSTEMS, S.L. y CIA., Soc. Comanditaria, as manufacturer, declares that this Declaration is issued under its sole responsibility and belongs to the following product range:

Product		Brand
Diaphragm Valves		DAVAMAT
Series		Batch No.
W (Weir Type)		20_
ST (Straight Through Type)		
Type	Nominal Size	Nominal Pressure
W	10-30	16
W	65-150	10
W	200	6
W	250	3
W	300	2
ST	15-100	10
ST	125-150	6
ST	200-300	3, 5
Relevant Standards		

The product range described above is in conformity with the relevant European Union harmonization legislation: Directive 2014/68/EU.

These products are classified up to Category I, Annex II table 9 (liquids of group 2), in conformance with the prescriptions of the Annex III Module A of these Directives

The Declaration certifies the conformity with the mentioned Directives, it does not contain any warranty of properties in the sense of the product liability law, however. The safety hints of the product information supplied with the product must be observed. In case of a modification of the product not agreed with the manufacturer or of non-observance of the safety hints this Declaration loses its validity.



EU DECLARATION OF CONFORMITY

EU DECLARATION OF CONFORMITY
in accordance with Pressure Equipment Directives 2014/68/EU

COMEVAL VALVE SYSTEMS, S.L. y CIA., Soc. Comanditaria, as manufacturer, declares that this Declaration is issued under its sole responsibility and belongs to the following product range:

Product	Brand
Flanged Floating Ball Valves	UNIFLOW®
Series	Batch No.
BV42263	20
Nominal pressure	Nominal Size
PN16	DN15-200
Relevant Standards	
EN 1717-1, EN 1717-2, EN 1717-3, EN 1717-4, EN 1717-5, EN 1717-6, EN 1717-7, EN 1717-8, EN 1717-9, EN 1717-10, EN 1717-11, EN 1717-12, EN 1717-13, EN 1717-14, EN 1717-15, EN 1717-16, EN 1717-17, EN 1717-18, EN 1717-19, EN 1717-20, EN 1717-21, EN 1717-22, EN 1717-23, EN 1717-24, EN 1717-25, EN 1717-26, EN 1717-27, EN 1717-28, EN 1717-29, EN 1717-30, EN 1717-31, EN 1717-32, EN 1717-33, EN 1717-34, EN 1717-35, EN 1717-36, EN 1717-37, EN 1717-38, EN 1717-39, EN 1717-40, EN 1717-41, EN 1717-42, EN 1717-43, EN 1717-44, EN 1717-45, EN 1717-46, EN 1717-47, EN 1717-48, EN 1717-49, EN 1717-50, EN 1717-51, EN 1717-52, EN 1717-53, EN 1717-54, EN 1717-55, EN 1717-56, EN 1717-57, EN 1717-58, EN 1717-59, EN 1717-60, EN 1717-61, EN 1717-62, EN 1717-63, EN 1717-64, EN 1717-65, EN 1717-66, EN 1717-67, EN 1717-68, EN 1717-69, EN 1717-70, EN 1717-71, EN 1717-72, EN 1717-73, EN 1717-74, EN 1717-75, EN 1717-76, EN 1717-77, EN 1717-78, EN 1717-79, EN 1717-80, EN 1717-81, EN 1717-82, EN 1717-83, EN 1717-84, EN 1717-85, EN 1717-86, EN 1717-87, EN 1717-88, EN 1717-89, EN 1717-90, EN 1717-91, EN 1717-92, EN 1717-93, EN 1717-94, EN 1717-95, EN 1717-96, EN 1717-97, EN 1717-98, EN 1717-99, EN 1717-100, EN 1717-101, EN 1717-102, EN 1717-103, EN 1717-104, EN 1717-105, EN 1717-106, EN 1717-107, EN 1717-108, EN 1717-109, EN 1717-110, EN 1717-111, EN 1717-112, EN 1717-113, EN 1717-114, EN 1717-115, EN 1717-116, EN 1717-117, EN 1717-118, EN 1717-119, EN 1717-120, EN 1717-121, EN 1717-122, EN 1717-123, EN 1717-124, EN 1717-125, EN 1717-126, EN 1717-127, EN 1717-128, EN 1717-129, EN 1717-130, EN 1717-131, EN 1717-132, EN 1717-133, EN 1717-134, EN 1717-135, EN 1717-136, EN 1717-137, EN 1717-138, EN 1717-139, EN 1717-140, EN 1717-141, EN 1717-142, EN 1717-143, EN 1717-144, EN 1717-145, EN 1717-146, EN 1717-147, EN 1717-148, EN 1717-149, EN 1717-150, EN 1717-151, EN 1717-152, EN 1717-153, EN 1717-154, EN 1717-155, EN 1717-156, EN 1717-157, EN 1717-158, EN 1717-159, EN 1717-160, EN 1717-161, EN 1717-162, EN 1717-163, EN 1717-164, EN 1717-165, EN 1717-166, EN 1717-167, EN 1717-168, EN 1717-169, EN 1717-170, EN 1717-171, EN 1717-172, EN 1717-173, EN 1717-174, EN 1717-175, EN 1717-176, EN 1717-177, EN 1717-178, EN 1717-179, EN 1717-180, EN 1717-181, EN 1717-182, EN 1717-183, EN 1717-184, EN 1717-185, EN 1717-186, EN 1717-187, EN 1717-188, EN 1717-189, EN 1717-190, EN 1717-191, EN 1717-192, EN 1717-193, EN 1717-194, EN 1717-195, EN 1717-196, EN 1717-197, EN 1717-198, EN 1717-199, EN 1717-200, EN 1717-201, EN 1717-202, EN 1717-203, EN 1717-204, EN 1717-205, EN 1717-206, EN 1717-207, EN 1717-208, EN 1717-209, EN 1717-210, EN 1717-211, EN 1717-212, EN 1717-213, EN 1717-214, EN 1717-215, EN 1717-216, EN 1717-217, EN 1717-218, EN 1717-219, EN 1717-220, EN 1717-221, EN 1717-222, EN 1717-223, EN 1717-224, EN 1717-225, EN 1717-226, EN 1717-227, EN 1717-228, EN 1717-229, EN 1717-230, EN 1717-231, EN 1717-232, EN 1717-233, EN 1717-234, EN 1717-235, EN 1717-236, EN 1717-237, EN 1717-238, EN 1717-239, EN 1717-240, EN 1717-241, EN 1717-242, EN 1717-243, EN 1717-244, EN 1717-245, EN 1717-246, EN 1717-247, EN 1717-248, EN 1717-249, EN 1717-250, EN 1717-251, EN 1717-252, EN 1717-253, EN 1717-254, EN 1717-255, EN 1717-256, EN 1717-257, EN 1717-258, EN 1717-259, EN 1717-260, EN 1717-261, EN 1717-262, EN 1717-263, EN 1717-264, EN 1717-265, EN 1717-266, EN 1717-267, EN 1717-268, EN 1717-269, EN 1717-270, EN 1717-271, EN 1717-272, EN 1717-273, EN 1717-274, EN 1717-275, EN 1717-276, EN 1717-277, EN 1717-278, EN 1717-279, EN 1717-280, EN 1717-281, EN 1717-282, EN 1717-283, EN 1717-284, EN 1717-285, EN 1717-286, EN 1717-287, EN 1717-288, EN 1717-289, EN 1717-290, EN 1717-291, EN 1717-292, EN 1717-293, EN 1717-294, EN 1717-295, EN 1717-296, EN 1717-297, EN 1717-298, EN 1717-299, EN 1717-300, EN 1717-301, EN 1717-302, EN 1717-303, EN 1717-304, EN 1717-305, EN 1717-306, EN 1717-307, EN 1717-308, EN 1717-309, EN 1717-310, EN 1717-311, EN 1717-312, EN 1717-313, EN 1717-314, EN 1717-315, EN 1717-316, EN 1717-317, EN 1717-318, EN 1717-319, EN 1717-320, EN 1717-321, EN 1717-322, EN 1717-323, EN 1717-324, EN 1717-325, EN 1717-326, EN 1717-327, EN 1717-328, EN 1717-329, EN 1717-330, EN 1717-331, EN 1717-332, EN 1717-333, EN 1717-334, EN 1717-335, EN 1717-336, EN 1717-337, EN 1717-338, EN 1717-339, EN 1717-340, EN 1717-341, EN 1717-342, EN 1717-343, EN 1717-344, EN 1717-345, EN 1717-346, EN 1717-347, EN 1717-348, EN 1717-349, EN 1717-350, EN 1717-351, EN 1717-352, EN 1717-353, EN 1717-354, EN 1717-355, EN 1717-356, EN 1717-357, EN 1717-358, EN 1717-359, EN 1717-360, EN 1717-361, EN 1717-362, EN 1717-363, EN 1717-364, EN 1717-365, EN 1717-366, EN 1717-367, EN 1717-368, EN 1717-369, EN 1717-370, EN 1717-371, EN 1717-372, EN 1717-373, EN 1717-374, EN 1717-375, EN 1717-376, EN 1717-377, EN 1717-378, EN 1717-379, EN 1717-380, EN 1717-381, EN 1717-382, EN 1717-383, EN 1717-384, EN 1717-385, EN 1717-386, EN 1717-387, EN 1717-388, EN 1717-389, EN 1717-390, EN 1717-391, EN 1717-392, EN 1717-393, EN 1717-394, EN 1717-395, EN 1717-396, EN 1717-397, EN 1717-398, EN 1717-399, EN 1717-400, EN 1717-401, EN 1717-402, EN 1717-403, EN 1717-404, EN 1717-405, EN 1717-406, EN 1717-407, EN 1717-408, EN 1717-409, EN 1717-410, EN 1717-411, EN 1717-412, EN 1717-413, EN 1717-414, EN 1717-415, EN 1717-416, EN 1717-417, EN 1717-418, EN 1717-419, EN 1717-420, EN 1717-421, EN 1717-422, EN 1717-423, EN 1717-424, EN 1717-425, EN 1717-426, EN 1717-427, EN 1717-428, EN 1717-429, EN 1717-430, EN 1717-431, EN 1717-432, EN 1717-433, EN 1717-434, EN 1717-435, EN 1717-436, EN 1717-437, EN 1717-438, EN 1717-439, EN 1717-440, EN 1717-441, EN 1717-442, EN 1717-443, EN 1717-444, EN 1717-445, EN 1717-446, EN 1717-447, EN 1717-448, EN 1717-449, EN 1717-450, EN 1717-451, EN 1717-452, EN 1717-453, EN 1717-454, EN 1717-455, EN 1717-456, EN 1717-457, EN 1717-458, EN 1717-459, EN 1717-460, EN 1717-461, EN 1717-462, EN 1717-463, EN 1717-464, EN 1717-465, EN 1717-466, EN 1717-467, EN 1717-468, EN 1717-469, EN 1717-470, EN 1717-471, EN 1717-472, EN 1717-473, EN 1717-474, EN 1717-475, EN 1717-476, EN 1717-477, EN 1717-478, EN 1717-479, EN 1717-480, EN 1717-481, EN 1717-482, EN 1717-483, EN 1717-484, EN 1717-485, EN 1717-486, EN 1717-487, EN 1717-488, EN 1717-489, EN 1717-490, EN 1717-491, EN 1717-492, EN 1717-493, EN 1717-494, EN 1717-495, EN 1717-496, EN 1717-497, EN 1717-498, EN 1717-499, EN 1717-500, EN 1717-501, EN 1717-502, EN 1717-503, EN 1717-504, EN 1717-505, EN 1717-506, EN 1717-507, EN 1717-508, EN 1717-509, EN 1717-510, EN 1717-511, EN 1717-512, EN 1717-513, EN 1717-514, EN 1717-515, EN 1717-516, EN 1717-517, EN 1717-518, EN 1717-519, EN 1717-520, EN 1717-521, EN 1717-522, EN 1717-523, EN 1717-524, EN 1717-525, EN 1717-526, EN 1717-527, EN 1717-528, EN 1717-529, EN 1717-530, EN 1717-531, EN 1717-532, EN 1717-533, EN 1717-534, EN 1717-535, EN 1717-536, EN 1717-537, EN 1717-538, EN 1717-539, EN 1717-540, EN 1717-541, EN 1717-542, EN 1717-543, EN 1717-544, EN 1717-545, EN 1717-546, EN 1717-547, EN 1717-548, EN 1717-549, EN 1717-550, EN 1717-551, EN 1717-552, EN 1717-553, EN 1717-554, EN 1717-555, EN 1717-556, EN 1717-557, EN 1717-558, EN 1717-559, EN 1717-560, EN 1717-561, EN 1717-562, EN 1717-563, EN 1717-564, EN 1717-565, EN 1717-566, EN 1717-567, EN 1717-568, EN 1717-569, EN 1717-570, EN 1717-571, EN 1717-572, EN 1717-573, EN 1717-574, EN 1717-575, EN 1717-576, EN 1717-577, EN 1717-578, EN 1717-579, EN 1717-580, EN 1717-581, EN 1717-582, EN 1717-583, EN 1717-584, EN 1717-585, EN 1717-586, EN 1717-587, EN 1717-588, EN 1717-589, EN 1717-590, EN 1717-591, EN 1717-592, EN 1717-593, EN 1717-594, EN 1717-595, EN 1717-596, EN 1717-597, EN 1717-598, EN 1717-599, EN 1717-600, EN 1717-601, EN 1717-602, EN 1717-603, EN 1717-604, EN 1717-605, EN 1717-606, EN 1717-607, EN 1717-608, EN 1717-609, EN 1717-610, EN 1717-611, EN 1717-612, EN 1717-613, EN 1717-614, EN 1717-615, EN 1717-616, EN 1717-617, EN 1717-618, EN 1717-619, EN 1717-620, EN 1717-621, EN 1717-622, EN 1717-623, EN 1717-624, EN 1717-625, EN 1717-626, EN 1717-627, EN 1717-628, EN 1717-629, EN 1717-630, EN 1717-631, EN 1717-632, EN 1717-633, EN 1717-634, EN 1717-635, EN 1717-636, EN 1717-637, EN 1717-638, EN 1717-639, EN 1717-640, EN 1717-641, EN 1717-642, EN 1717-643, EN 1717-644, EN 1717-645, EN 1717-646, EN 1717-647, EN 1717-648, EN 1717-649, EN 1717-650, EN 1717-651, EN 1717-652, EN 1717-653, EN 1717-654, EN 1717-655, EN 1717-656, EN 1717-657, EN 1717-658, EN 1717-659, EN 1717-660, EN 1717-661, EN 1717-662, EN 1717-663, EN 1717-664, EN 1717-665, EN 1717-666, EN 1717-667, EN 1717-668, EN 1717-669, EN 1717-670, EN 1717-671, EN 1717-672, EN 1717-673, EN 1717-674, EN 1717-675, EN 1717-676, EN 1717-677, EN 1717-678, EN 1717-679, EN 1717-680, EN 1717-681, EN 1717-682, EN 1717-683, EN 1717-684, EN 1717-685, EN 1717-686, EN 1717-687, EN 1717-688, EN 1717-689, EN 1717-690, EN 1717-691, EN 1717-692, EN 1717-693, EN 1717-694, EN 1717-695, EN 1717-696, EN 1717-697, EN 1717-698, EN 1717-699, EN 1717-700, EN 1717-701, EN 1717-702, EN 1717-703, EN 1717-704, EN 1717-705, EN 1717-706, EN 1717-707, EN 1717-708, EN 1717-709, EN 1717-710, EN 1717-711, EN 1717-712, EN 1717-713, EN 1717-714, EN 1717-715, EN 1717-716, EN 1717-717, EN 1717-718, EN 1717-719, EN 1717-720, EN 1717-721, EN 1717-722, EN 1717-723, EN 1717-724, EN 1717-725, EN 1717-726, EN 1717-727, EN 1717-728, EN 1717-729, EN 1717-730, EN 1717-731, EN 1717-732, EN 1717-733, EN 1717-734, EN 1717-735, EN 1717-736, EN 1717-737, EN 1717-738, EN 1717-739, EN 1717-740, EN 1717-741, EN 1717-742, EN 1717-743, EN 1717-744, EN 1717-745, EN 1717-746, EN 1717-747, EN 1717-748, EN 1717-749, EN 1717-750, EN 1717-751, EN 1717-752, EN 1717-753, EN 1717-754, EN 1717-755, EN 1717-756, EN 1717-757, EN 1717-758, EN 1717-759, EN 1717-760, EN 1717-761, EN 1717-762, EN 1717-763, EN 1717-764, EN 1717-765, EN 1717-766, EN 1717-767, EN 1717-768, EN 1717-769, EN 1717-770, EN 1717-771, EN 1717-772, EN 1717-773, EN 1717-774, EN 1717-775, EN 1717-776, EN 1717-777, EN 1717-778, EN 1717-779, EN 1717-780, EN 1717-781, EN 1717-782, EN 1717-783, EN 1717-784, EN 1717-785, EN 1717-786, EN 1717-787, EN 1717-788, EN 1717-789, EN 1717-790, EN 1717-791, EN 1717-792, EN 1717-793, EN 1717-794, EN 1717-795, EN 1717-796, EN 1717-797, EN 1717-798, EN 1717-799, EN 1717-800, EN 1717-801, EN 1717-802, EN 1717-803, EN 1717-804, EN 1717-805, EN 1717-806, EN 1717-807, EN 1717-808, EN 1717-809, EN 1717-810, EN 1717-811, EN 1717-812, EN 1717-813, EN 1717-814, EN 1717-815, EN 1717-816, EN 1717-817, EN 1717-818, EN 1717-819, EN 1717-820, EN 1717-821, EN 1717-822, EN 1717-823, EN 1717-824, EN 1717-825, EN 1717-826, EN 1717-827, EN 1717-828, EN 1717-829, EN 1717-830, EN 1717-831, EN 1717-832, EN 1717-833, EN 1717-834, EN 1717-835, EN 1717-836, EN 1717-837, EN 1717-838, EN 1717-839, EN 1717-840, EN 1717-841, EN 1717-842, EN 1717-843, EN 1717-844, EN 1717-845, EN 1717-846, EN 1717-847, EN 1717-848, EN 1717-849, EN 1717-850, EN 1717-851, EN 1717-852, EN 1717-853, EN 1717-854, EN 1717-855, EN 1717-856, EN 1717-857, EN 1717-858, EN 1717-859, EN 1717-860, EN 1717-861, EN 1717-862, EN 1717-863, EN 1717-864, EN 1717-865, EN 1717-866, EN 1717-867, EN 1717-868, EN 1717-869, EN 1717-870, EN 1717-871, EN 1717-872, EN 1717-873, EN 1717-874, EN 1717-875, EN 1717-876, EN 1717-877, EN 1717-878, EN 1717-879, EN 1717-880, EN 1717-881, EN 1717-882, EN 1717-883, EN 1717-884, EN 1717-885, EN 1717-886, EN 1717-887, EN 1717-888, EN 1717-889, EN 1717-890, EN 1717-891, EN 1717-892, EN 1717-893, EN 1717-894, EN 1717-895, EN 1717-896, EN 1717-897, EN 1717-898, EN 1717-899, EN 1717-900, EN 1717-901, EN 1717-902, EN 1717-903, EN 1717-904, EN 1717-905, EN 1717-906, EN 1717-907, EN 1717-908, EN 1717-909, EN 1717-910, EN 1717-911, EN 1717-912, EN 1717-913, EN 1717-914, EN 1717-915, EN 1717-916, EN 1717-917, EN 1717-918, EN 1717-919, EN 1717-920, EN 1717-921, EN 1717-922, EN 1717-923, EN 1717-924, EN 1717-925, EN 1717-926, EN 1717-927, EN 1717-928, EN 1717-929, EN 1717-930, EN 1717-931, EN 1717-932, EN 1717-933, EN 1717-934, EN 1717-935, EN 1717-936, EN 1717-937, EN 1717-938, EN 1717-939, EN 1717-940, EN 1717-941, EN 1717-942, EN 1717-943, EN 1717-944, EN 1717-945, EN 1717-946, EN 1717-947, EN 1717-948, EN 1717-949, EN 1717-950, EN 1717-951, EN 1717-952, EN 1717-953, EN 1717-954, EN 1717-955, EN 1717-956, EN 1717-957, EN 1717-958, EN 1717-959, EN 1717-960, EN 1717-961, EN 1717-962, EN 1717-963, EN 1717-964, EN 1717-965, EN 1717-966, EN 1717-967, EN 1717-968, EN 1717-969, EN 1717-970, EN 1717-971, EN 1717-972, EN 1717-973, EN 1717-974, EN 1717-975, EN 1717-976, EN 1717-977, EN 1717-978, EN 1717-979, EN 1717-980, EN 1717-981, EN 1717-982, EN 1717-983, EN 1717-984, EN 1717-985, EN 1717-986, EN 1717-987, EN 1717-988, EN 1717-989, EN 1717-990, EN 1717-991, EN 1717-992, EN 1717-993, EN 1717-994, EN 1717-995, EN 1717-996, EN 1717-997, EN 1717-998, EN 1717-999, EN 1717-1000, EN 1717-1001, EN 1717-1002, EN 1717-1003, EN 1717-1004, EN 1717-1005, EN 1717-1006, EN 1717-1007, EN 1717-1008, EN 1717-1009, EN 1717-1010, EN 1717-1011, EN 1717-1012, EN 1717-1013, EN 1717-1014, EN 1717-1015, EN 1717-1016, EN 1717-1017, EN 1717-1018, EN 1717-1019, EN 1717-1020, EN 1717-1021, EN 1717-1022, EN 1717-1023, EN 1717-1024, EN 1717-1025, EN 1717-1026, EN 1717-1027, EN 1717-1028, EN 1717-1029, EN 1717-1030, EN 1717-1031, EN 1717-1032, EN 1717-1033, EN 1717-1034, EN 1717-1035, EN 1717-1036, EN 1717-1037, EN 1717-1038, EN 1717-1039, EN 1717-1040, EN 1717-1041, EN 1717-1042, EN 1717-1043, EN 1717-1044, EN 1717-1045, EN 1717-1046, EN 1717-1047, EN 1717-1048, EN 1717-1049, EN 1717-1050, EN 1717-1051, EN 1717-1052, EN 1717-1053, EN 1717-1054, EN 1717-1055, EN 1717-1056, EN 1717-1057, EN 1717-1058, EN 1717-1059, EN 1717-1060, EN 1717-1061, EN 1717-1062, EN 1717-1063, EN 1717-1064, EN 1717-1065, EN 1717-1066, EN 1717-1067, EN 1717-1068, EN 1717-1069, EN 1717-1070, EN 1717-1071, EN 1717-1072, EN 1717-1073, EN 1717-1074, EN 1717-1075, EN 1717-1076, EN 1717-1077, EN 1717-1078, EN 1717-1079, EN 1717-1080, EN 1717-1081, EN 1717-1082, EN 1717-1083, EN 1717-1084, EN 1717-1085, EN 1717-1086, EN 1717-1087, EN 1717-1088, EN 1717-1089, EN 1717-1090, EN 1717-1091, EN 1717-1092, EN 1717-1093, EN 1717-1094, EN 1717-1095, EN 1717-1096, EN 1717-1097, EN 1717-1098, EN 1717-1099, EN 1717-1100, EN 1717-1101, EN 1717-1102, EN 1717-1103, EN 1717-1104, EN 1717-1105, EN 1717-1106, EN 1717-1107, EN 1717-1108, EN 1717-1109, EN 1717-1110, EN 1717-1111, EN 1717-1112,	

The product range described above is in conformity with the relevant European Union harmonization legislation:
Directive 2014/68/EU

These products are classified up to Category I, Annex II table 9 (liquids of group 2), in conformance with the prescriptions of the Annex III Module A of these Directives

DECLARATION OF INCORPORATION OF PARTLY COMPLETED MACHINERY
in accordance with Machinery Directive 2006/42/EC

COMEVAL VALVE SYSTEMS, S.L. y CIA., Soc. Comanditaria, as manufacturer, declares that this Declaration is issued under its sole responsibility and belongs to the above defined product range.

These products are considered as partly completed machinery thrust actuators, being in *COMEVAL* intended and ready to be assembled with electric, pneumatic and hydraulic thrust actuators, being in *COMEVAL* accordance with the relevant requirements of the Union harmonization legislation, Directive 2006/42/EC, acc. to its Annex I, Articles 1.1.2, 1.1.3, 1.1.5, 1.2.1, 1.3.1, 1.3.2, 1.3.4, 1.3.7, 1.3.9, 1.5.2, 1.5.4, 1.5.5, 1.5.6, 1.5.7, 1.6.1, 1.7.1, 1.7.2, 1.7.3, 1.7.4.

The product must not be put into service until the final machinery, into which it is to be incorporated, has been declared in conformity with the provisions of the Directive 2006/42/EC.

COMEVAL commits to submitting the relevant information on the partly completed machinery to the national competent authority via electronic transmission upon request. The relevant technical documentation pertaining to the machinery described in Annex VII, part B has been prepared.

Authorised person for documentation: Javier Galán

Document signed for and on behalf of COMEVAL VALVE SYSTEMS, S.L. y CIA., Soc. Comanditaria, in El Puig – Valencia (Spain), on October 20, 2021

Enrique Bort
Managing director

The Declaration certifies the conformity with the mentioned Directives, it does not contain any warranty of properties in the sense of the product liability law, however. The safety hints of the product information supplied with the product must be observed. In case of a modification of the product not agreed with the manufacturer or of non-observance of the safety hints this Declaration loses its validity.



EU DECLARATION OF CONFORMITY

EU DECLARATION OF CONFORMITY
in accordance with Pressure Equipment Directives 2014/68/EU

COMEVAL VALVE SYSTEMS, S.L. y CIA., Soc. Comanditaria, as manufacturer, declares that this Declaration is issued under its sole responsibility and belongs to the following product range:

Product	Brand
Y-Strainers	UNIFLOW®
Series	Batch No.
630N, 900	20
Nominal pressure	Nominal Size
PN16	DN15-300
Relevant Standards	
EN 13635-2-1, EN 13635-2-2, EN 13635-2-3, EN 13635-2-4	

The product range described above is in conformity with the relevant European Union harmonization legislation:
Directive 2014/68/EU

These products are classified up to Category I, Annex II table 9 (liquids of group 2), in conformance with the prescriptions of the Annex III Module A of these Directives

Document signed for and on behalf of COMEVAL VALVE SYSTEMS, S.L. y CIA., Soc. Comanditaria, in
El Puig – Valencia (Spain), on October 20, 2021

Enrique Bort
Managing director

The Declaration certifies the conformity with the mentioned Directives, it does not contain any warranty of properties in the sense of the product liability law, however. The safety hints of the product information supplied with the product must be observed. In case of a modification of the product not agreed with the manufacturer or of non-observance of the safety hints this Declaration loses its validity.



EU DECLARATION OF CONFORMITY

in accordance with Pressure Equipment Directives 2014/68/EU

COMEVAL VALVE SYSTEMS, S.L. y CIA., Soc. Comanditaria, as manufacturer, declares that this Declaration is issued under its sole responsibility and belongs to the following product range:

Product	Brand
Metal Expansion Compensators	TORAFLEX®
Series	Batch No.
525, 530	20
Nominal pressure	Nominal Size
PN10, PN16	DN20-600
Relevant Standards	
EN 12952-1, EN 12952-2, EN 12952-3, EN 12952-4, EN 12952-5, EN 12952-6, EN 12952-7, EN 12952-8, EN 12952-9, EN 12952-10, EN 12952-11, EN 12952-12, EN 12952-13, EN 12952-14, EN 12952-15, EN 12952-16, EN 12952-17, EN 12952-18, EN 12952-19, EN 12952-20, EN 12952-21, EN 12952-22, EN 12952-23, EN 12952-24, EN 12952-25, EN 12952-26, EN 12952-27, EN 12952-28, EN 12952-29, EN 12952-30, EN 12952-31, EN 12952-32, EN 12952-33, EN 12952-34, EN 12952-35, EN 12952-36, EN 12952-37, EN 12952-38, EN 12952-39, EN 12952-40, EN 12952-41, EN 12952-42, EN 12952-43, EN 12952-44, EN 12952-45, EN 12952-46, EN 12952-47, EN 12952-48, EN 12952-49, EN 12952-50, EN 12952-51, EN 12952-52, EN 12952-53, EN 12952-54, EN 12952-55, EN 12952-56, EN 12952-57, EN 12952-58, EN 12952-59, EN 12952-60, EN 12952-61, EN 12952-62, EN 12952-63, EN 12952-64, EN 12952-65, EN 12952-66, EN 12952-67, EN 12952-68, EN 12952-69, EN 12952-70, EN 12952-71, EN 12952-72, EN 12952-73, EN 12952-74, EN 12952-75, EN 12952-76, EN 12952-77, EN 12952-78, EN 12952-79, EN 12952-80, EN 12952-81, EN 12952-82, EN 12952-83, EN 12952-84, EN 12952-85, EN 12952-86, EN 12952-87, EN 12952-88, EN 12952-89, EN 12952-90, EN 12952-91, EN 12952-92, EN 12952-93, EN 12952-94, EN 12952-95, EN 12952-96, EN 12952-97, EN 12952-98, EN 12952-99, EN 12952-100, EN 12952-101, EN 12952-102, EN 12952-103, EN 12952-104, EN 12952-105, EN 12952-106, EN 12952-107, EN 12952-108, EN 12952-109, EN 12952-110, EN 12952-111, EN 12952-112, EN 12952-113, EN 12952-114, EN 12952-115, EN 12952-116, EN 12952-117, EN 12952-118, EN 12952-119, EN 12952-120, EN 12952-121, EN 12952-122, EN 12952-123, EN 12952-124, EN 12952-125, EN 12952-126, EN 12952-127, EN 12952-128, EN 12952-129, EN 12952-130, EN 12952-131, EN 12952-132, EN 12952-133, EN 12952-134, EN 12952-135, EN 12952-136, EN 12952-137, EN 12952-138, EN 12952-139, EN 12952-140, EN 12952-141, EN 12952-142, EN 12952-143, EN 12952-144, EN 12952-145, EN 12952-146, EN 12952-147, EN 12952-148, EN 12952-149, EN 12952-150, EN 12952-151, EN 12952-152, EN 12952-153, EN 12952-154, EN 12952-155, EN 12952-156, EN 12952-157, EN 12952-158, EN 12952-159, EN 12952-160, EN 12952-161, EN 12952-162, EN 12952-163, EN 12952-164, EN 12952-165, EN 12952-166, EN 12952-167, EN 12952-168, EN 12952-169, EN 12952-170, EN 12952-171, EN 12952-172, EN 12952-173, EN 12952-174, EN 12952-175, EN 12952-176, EN 12952-177, EN 12952-178, EN 12952-179, EN 12952-180, EN 12952-181, EN 12952-182, EN 12952-183, EN 12952-184, EN 12952-185, EN 12952-186, EN 12952-187, EN 12952-188, EN 12952-189, EN 12952-190, EN 12952-191, EN 12952-192, EN 12952-193, EN 12952-194, EN 12952-195, EN 12952-196, EN 12952-197, EN 12952-198, EN 12952-199, EN 12952-200, EN 12952-201, EN 12952-202, EN 12952-203, EN 12952-204, EN 12952-205, EN 12952-206, EN 12952-207, EN 12952-208, EN 12952-209, EN 12952-210, EN 12952-211, EN 12952-212, EN 12952-213, EN 12952-214, EN 12952-215, EN 12952-216, EN 12952-217, EN 12952-218, EN 12952-219, EN 12952-220, EN 12952-221, EN 12952-222, EN 12952-223, EN 12952-224, EN 12952-225, EN 12952-226, EN 12952-227, EN 12952-228, EN 12952-229, EN 12952-230, EN 12952-231, EN 12952-232, EN 12952-233, EN 12952-234, EN 12952-235, EN 12952-236, EN 12952-237, EN 12952-238, EN 12952-239, EN 12952-240, EN 12952-241, EN 12952-242, EN 12952-243, EN 12952-244, EN 12952-245, EN 12952-246, EN 12952-247, EN 12952-248, EN 12952-249, EN 12952-250, EN 12952-251, EN 12952-252, EN 12952-253, EN 12952-254, EN 12952-255, EN 12952-256, EN 12952-257, EN 12952-258, EN 12952-259, EN 12952-260, EN 12952-261, EN 12952-262, EN 12952-263, EN 12952-264, EN 12952-265, EN 12952-266, EN 12952-267, EN 12952-268, EN 12952-269, EN 12952-270, EN 12952-271, EN 12952-272, EN 12952-273, EN 12952-274, EN 12952-275, EN 12952-276, EN 12952-277, EN 12952-278, EN 12952-279, EN 12952-280, EN 12952-281, EN 12952-282, EN 12952-283, EN 12952-284, EN 12952-285, EN 12952-286, EN 12952-287, EN 12952-288, EN 12952-289, EN 12952-290, EN 12952-291, EN 12952-292, EN 12952-293, EN 12952-294, EN 12952-295, EN 12952-296, EN 12952-297, EN 12952-298, EN 12952-299, EN 12952-300, EN 12952-301, EN 12952-302, EN 12952-303, EN 12952-304, EN 12952-305, EN 12952-306, EN 12952-307, EN 12952-308, EN 12952-309, EN 12952-310, EN 12952-311, EN 12952-312, EN 12952-313, EN 12952-314, EN 12952-315, EN 12952-316, EN 12952-317, EN 12952-318, EN 12952-319, EN 12952-320, EN 12952-321, EN 12952-322, EN 12952-323, EN 12952-324, EN 12952-325, EN 12952-326, EN 12952-327, EN 12952-328, EN 12952-329, EN 12952-330, EN 12952-331, EN 12952-332, EN 12952-333, EN 12952-334, EN 12952-335, EN 12952-336, EN 12952-337, EN 12952-338, EN 12952-339, EN 12952-340, EN 12952-341, EN 12952-342, EN 12952-343, EN 12952-344, EN 12952-345, EN 12952-346, EN 12952-347, EN 12952-348, EN 12952-349, EN 12952-350, EN 12952-351, EN 12952-352, EN 12952-353, EN 12952-354, EN 12952-355, EN 12952-356, EN 12952-357, EN 12952-358, EN 12952-359, EN 12952-360, EN 12952-361, EN 12952-362, EN 12952-363, EN 12952-364, EN 12952-365, EN 12952-366, EN 12952-367, EN 12952-368, EN 12952-369, EN 12952-370, EN 12952-371, EN 12952-372, EN 12952-373, EN 12952-374, EN 12952-375, EN 12952-376, EN 12952-377, EN 12952-378, EN 12952-379, EN 12952-380, EN 12952-381, EN 12952-382, EN 12952-383, EN 12952-384, EN 12952-385, EN 12952-386, EN 12952-387, EN 12952-388, EN 12952-389, EN 12952-390, EN 12952-391, EN 12952-392, EN 12952-393, EN 12952-394, EN 12952-395, EN 12952-396, EN 12952-397, EN 12952-398, EN 12952-399, EN 12952-400, EN 12952-401, EN 12952-402, EN 12952-403, EN 12952-404, EN 12952-405, EN 12952-406, EN 12952-407, EN 12952-408, EN 12952-409, EN 12952-410, EN 12952-411, EN 12952-412, EN 12952-413, EN 12952-414, EN 12952-415, EN 12952-416, EN 12952-417, EN 12952-418, EN 12952-419, EN 12952-420, EN 12952-421, EN 12952-422, EN 12952-423, EN 12952-424, EN 12952-425, EN 12952-426, EN 12952-427, EN 12952-428, EN 12952-429, EN 12952-430, EN 12952-431, EN 12952-432, EN 12952-433, EN 12952-434, EN 12952-435, EN 12952-436, EN 12952-437, EN 12952-438, EN 12952-439, EN 12952-440, EN 12952-441, EN 12952-442, EN 12952-443, EN 12952-444, EN 12952-445, EN 12952-446, EN 12952-447, EN 12952-448, EN 12952-449, EN 12952-450, EN 12952-451, EN 12952-452, EN 12952-453, EN 12952-454, EN 12952-455, EN 12952-456, EN 12952-457, EN 12952-458, EN 12952-459, EN 12952-460, EN 12952-461, EN 12952-462, EN 12952-463, EN 12952-464, EN 12952-465, EN 12952-466, EN 12952-467, EN 12952-468, EN 12952-469, EN 12952-470, EN 12952-471, EN 12952-472, EN 12952-473, EN 12952-474, EN 12952-475, EN 12952-476, EN 12952-477, EN 12952-478, EN 12952-479, EN 12952-480, EN 12952-481, EN 12952-482, EN 12952-483, EN 12952-484, EN 12952-485, EN 12952-486, EN 12952-487, EN 12952-488, EN 12952-489, EN 12952-490, EN 12952-491, EN 12952-492, EN 12952-493, EN 12952-494, EN 12952-495, EN 12952-496, EN 12952-497, EN 12952-498, EN 12952-499, EN 12952-500, EN 12952-501, EN 12952-502, EN 12952-503, EN 12952-504, EN 12952-505, EN 12952-506, EN 12952-507, EN 12952-508, EN 12952-509, EN 12952-510, EN 12952-511, EN 12952-512, EN 12952-513, EN 12952-514, EN 12952-515, EN 12952-516, EN 12952-517, EN 12952-518, EN 12952-519, EN 12952-520, EN 12952-521, EN 12952-522, EN 12952-523, EN 12952-524, EN 12952-525, EN 12952-526, EN 12952-527, EN 12952-528, EN 12952-529, EN 12952-530, EN 12952-531, EN 12952-532, EN 12952-533, EN 12952-534, EN 12952-535, EN 12952-536, EN 12952-537, EN 12952-538, EN 12952-539, EN 12952-540, EN 12952-541, EN 12952-542, EN 12952-543, EN 12952-544, EN 12952-545, EN 12952-546, EN 12952-547, EN 12952-548, EN 12952-549, EN 12952-550, EN 12952-551, EN 12952-552, EN 12952-553, EN 12952-554, EN 12952-555, EN 12952-556, EN 12952-557, EN 12952-558, EN 12952-559, EN 12952-560, EN 12952-561, EN 12952-562, EN 12952-563, EN 12952-564, EN 12952-565, EN 12952-566, EN 12952-567, EN 12952-568, EN 12952-569, EN 12952-570, EN 12952-571, EN 12952-572, EN 12952-573, EN 12952-574, EN 12952-575, EN 12952-576, EN 12952-577, EN 12952-578, EN 12952-579, EN 12952-580, EN 12952-581, EN 12952-582, EN 12952-583, EN 12952-584, EN 12952-585, EN 12952-586, EN 12952-587, EN 12952-588, EN 12952-589, EN 12952-590, EN 12952-591, EN 12952-592, EN 12952-593, EN 12952-594, EN 12952-595, EN 12952-596, EN 12952-597, EN 12952-598, EN 12952-599, EN 12952-600, EN 12952-601, EN 12952-602, EN 12952-603, EN 12952-604, EN 12952-605, EN 12952-606, EN 12952-607, EN 12952-608, EN 12952-609, EN 12952-610, EN 12952-611, EN 12952-612, EN 12952-613, EN 12952-614, EN 12952-615, EN 12952-616, EN 12952-617, EN 12952-618, EN 12952-619, EN 12952-620, EN 12952-621, EN 12952-622, EN 12952-623, EN 12952-624, EN 12952-625, EN 12952-626, EN 12952-627, EN 12952-628, EN 12952-629, EN 12952-630, EN 12952-631, EN 12952-632, EN 12952-633, EN 12952-634, EN 12952-635, EN 12952-636, EN 12952-637, EN 12952-638, EN 12952-639, EN 12952-640, EN 12952-641, EN 12952-642, EN 12952-643, EN 12952-644, EN 12952-645, EN 12952-646, EN 12952-647, EN 12952-648, EN 12952-649, EN 12952-650, EN 12952-651, EN 12952-652, EN 12952-653, EN 12952-654, EN 12952-655, EN 12952-656, EN 12952-657, EN 12952-658, EN 12952-659, EN 12952-660, EN 12952-661, EN 12952-662, EN 12952-663, EN 12952-664, EN 12952-665, EN 12952-666, EN 12952-667, EN 12952-668, EN 12952-669, EN 12952-670, EN 12952-671, EN 12952-672, EN 12952-673, EN 12952-674, EN 12952-675, EN 12952-676, EN 12952-677, EN 12952-678, EN 12952-679, EN 12952-680, EN 12952-681, EN 12952-682, EN 12952-683, EN 12952-684, EN 12952-685, EN 12952-686, EN 12952-687, EN 12952-688, EN 12952-689, EN 12952-690, EN 12952-691, EN 12952-692, EN 12952-693, EN 12952-694, EN 12952-695, EN 12952-696, EN 12952-697, EN 12952-698, EN 12952-699, EN 12952-700, EN 12952-701, EN 12952-702, EN 12952-703, EN 12952-704, EN 12952-705, EN 12952-706, EN 12952-707, EN 12952-708, EN 12952-709, EN 12952-710, EN 12952-711, EN 12952-712, EN 12952-713, EN 12952-714, EN 12952-715, EN 12952-716, EN 12952-717, EN 12952-718, EN 12952-719, EN 12952-720, EN 12952-721, EN 12952-722, EN 12952-723, EN 12952-724, EN 12952-725, EN 12952-726, EN 12952-727, EN 12952-728, EN 12952-729, EN 12952-730, EN 12952-731, EN 12952-732, EN 12952-733, EN 12952-734, EN 12952-735, EN 12952-736, EN 12952-737, EN 12952-738, EN 12952-739, EN 12952-740, EN 12952-741, EN 12952-742, EN 12952-743, EN 12952-744, EN 12952-745, EN 12952-746, EN 12952-747, EN 12952-748, EN 12952-749, EN 12952-750, EN 12952-751, EN 12952-752, EN 12952-753, EN 12952-754, EN 12952-755, EN 12952-756, EN 12952-757, EN 12952-758, EN 12952-759, EN 12952-760, EN 12952-761, EN 12952-762, EN 12952-763, EN 12952-764, EN 12952-765, EN 12952-766, EN 12952-767, EN 12952-768, EN 12952-769, EN 12952-770, EN 12952-771, EN 12952-772, EN 12952-773, EN 12952-774, EN 12952-775, EN 12952-776, EN 12952-777, EN 12952-778, EN 12952-779, EN 12952-780, EN 12952-781, EN 12952-782, EN 12952-783, EN 12952-784, EN 12952-785, EN 12952-786, EN 12952-787, EN 12952-788, EN 12952-789, EN 12952-790, EN 12952-791, EN 12952-792, EN 12952-793, EN 12952-794, EN 12952-795, EN 12952-796, EN 12952-797, EN 12952-798, EN 12952-799, EN 12952-800, EN 12952-801, EN 12952-802, EN 12952-803, EN 12952-804, EN 12952-805, EN 12952-806, EN 12952-807, EN 12952-808, EN 12952-809, EN 12952-810, EN 12952-811, EN 12952-812, EN 12952-813, EN 12952-814, EN 12952-815, EN 12952-816, EN 12952-817, EN 12952-818, EN 12952-819, EN 12952-820, EN 12952-821, EN 12952-822, EN 12952-823, EN 12952-824, EN 12952-825, EN 12952-826, EN 12952-827, EN 12952-828, EN 12952-829, EN 12952-830, EN 12952-831, EN 12952-832, EN 12952-833, EN 12952-834, EN 12952-835, EN 12952-836, EN 12952-837, EN 12952-838, EN 12952-839, EN 12952-840, EN 12952-841, EN 12952-842, EN 12952-843, EN 12952-844, EN 12952-845, EN 12952-846, EN 12952-847, EN 12952-848, EN 12952-849, EN 12952-850, EN 12952-851, EN 12952-852, EN 12952-853, EN 12952-854, EN 12952-855, EN 12952-856, EN 12952-857, EN 12952-858, EN 12952-859, EN 12952-860, EN 12952-861, EN 12952-862, EN 12952-863, EN 12952-864, EN 12952-865, EN 12952-866, EN 12952-867, EN 12952-868, EN 12952-869, EN 12952-870, EN 12952-871, EN 12952-872, EN 12952-873, EN 12952-874, EN 12952-875, EN 12952-876, EN 12952-877, EN 12952-878, EN 12952-879, EN 12952-880, EN 12952-881, EN 12952-882, EN 12952-883, EN 12952-884, EN 12952-885, EN 12952-886, EN 12952-887, EN 12952-888, EN 12952-889, EN 12952-890, EN 12952-891, EN 12952-892, EN 12952-893, EN 12952-894, EN 12952-895, EN 12952-896, EN 12952-897, EN 12952-898, EN 12952-899, EN 12952-900, EN 12952-901, EN 12952-902, EN 12952-903, EN 12952-904, EN 12952-905, EN 12952-906, EN 12952-907, EN 12952-908, EN 12952-909, EN 12952-910, EN 12952-911, EN 12952-912, EN 12952-913, EN 12952-914, EN 12952-915, EN 12952-916, EN 12952-917, EN 12952-918, EN 12952-919, EN 12952-920, EN 12952-921, EN 12952-922, EN 12952-923, EN 12952-924, EN 12952-925, EN 12952-926, EN 12952-927, EN 12952-928, EN 12952-929, EN 12952-930, EN 12952-931, EN 12952-932, EN 12952-933, EN 12952-934, EN 12952-935, EN 12952-936, EN 12952-937, EN 12952-938, EN 12952-939, EN 12952-940, EN 12952-941, EN 12952-942, EN 12952-943, EN 12952-944, EN 12952-945, EN 12952-946, EN 12952-947, EN 12952-948, EN 12952-949, EN 12952-950, EN 12952-951, EN 12952-952, EN 12952-953, EN 12952-954, EN 12952-955, EN 12952-956, EN 12952-957, EN 12952-958, EN 12952-959, EN 12952-960, EN 12952-961, EN 12952-962, EN 12952-963, EN 12952-964, EN 12952-965, EN 12952-966, EN 12952-967, EN 12952-968, EN 12952-969, EN 12952-970, EN 12952-971, EN 12952-972, EN 12952-973, EN 12952-974, EN 12952-975, EN 12952-976, EN 12952-977, EN 12952-978, EN 12952-979, EN 12952-980, EN 12952-981, EN 12952-982, EN 12952-983, EN 12952-984, EN 12952-985, EN 12952-986, EN 12952-987, EN 12952-988, EN 12952-989, EN 12952-990, EN 12952-991, EN 12952-992, EN 12952-993, EN 12952-994, EN 12952-995, EN 12952-996, EN 12952-997, EN 12952-998, EN 12952-999, EN 12952-1000, EN 12952-1001, EN 12952-1002, EN 12952-1003, EN 12952-1004, EN 12952-1005, EN 12952-1006, EN 12952-1007, EN 12952-1008, EN 12952-1009, EN 12952-1010, EN 12952-1011, EN 12952-1012, EN 12952-1013, EN 12952-1014, EN 12952-1015, EN 12952-1016, EN 12952-1017, EN 12952-1018, EN 12952-1019, EN 12952-1020, EN 12952-1021, EN 12952-1022, EN 12952-1023, EN 12952-1024, EN 12952-1025, EN 12952-1026, EN	


The product range described above is in conformity with the relevant European Union harmonization legislation:
Directive 2014/68/EU

These products are classified up to Category I, Annex II table 9 (liquids of group 2), in conformance with the prescriptions of the Annex III Module A of these Directives



Document signed for and on behalf of COMEVAL VALVE SYSTEMS, S.L. y CIA., Soc. Comanditaria, in El Puig – Valencia (Spain), on October 20, 2021

Enrique Bort
Managing director

The Declaration certifies the conformity with the mentioned Directives, it does not contain any warranty of properties in the sense of the product liability law, however. The safety hints of the product information supplied with the product must be observed. In case of a modification of the product not agreed with the manufacturer or of non-observance of the safety hints this Declaration loses its validity.



COMEVAL VALVE SYSTEMS, S.L. y CIA.,
Soc. Comanditaria
Les Rotes,15 (Poligono Industrial El Puig) 46540
EL PUIG (Valencia) SPAIN



EU DECLARATION OF CONFORMITY

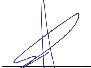
in accordance with Pressure Equipment Directives 2014/68/EU

COMEVAL VALVE SYSTEMS, S.L. y CIA., Soc. Comanditaria, as manufacturer, declares that this Declaration is issued under its sole responsibility and belongs to the following product range:

Product	Brand
Rubber joints	UNIFLOW*
Series	Batch No.
S10, S15, S20, S30, S33	20
Nominal pressure	Nominal Size
PN17, PN16	DN25-1200
Relevant Standards	
EN 1092-1, EN 12266-1	


We confirm by this declaration that the range of Rubber Joints defined to the above series are products not included in the scope of European Directive 2014/68/EU, in accordance with its article 1.2(O), being designed and manufactured according to the sound engineering practice in this State, which ensures its safe operation.

Document signed for and on behalf of COMEVAL VALVE SYSTEMS, S.L. y CIA., Soc. Comanditaria, in El Puig - Valencia (Spain), on February 24, 2020




Enrique Bort
Managing director

The Declaration certifies the conformity with the mentioned Directives, it does not contain any warranty of properties in the sense of the product liability law, however. The safety hints of the product information supplied with the product must be observed. In case of a modification of the product not agreed with the manufacturer or of non-observance of the safety hints this Declaration loses its validity.

[rubber_joints-s10_s15_s20_s30_s33-forflex-declaration_of_conformity-en-do13.docx](#)



COMEVAL VALVE SYSTEMS, S.L. y CIA.,
Soc. Comanditaria
Les Rotes,15 (Poligono Industrial El Puig) 46540
EL PUIG (Valencia) SPAIN



EU DECLARATION OF CONFORMITY

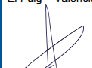
in accordance with Pressure Equipment Directives 2014/68/EU

COMEVAL VALVE SYSTEMS, S.L. y CIA., Soc. Comanditaria, as manufacturer, declares that this Declaration is issued under its sole responsibility and belongs to the following product range:

Product	Brand
Flex Swing Check Valves	UNIWAT*
Series	Batch No.
S107	20
Nominal pressure	Nominal Size
PN10, PN16	DN20-600
Relevant Standards	
EN 12216-3/A, DIN 3540, EN 1092-2	


The product range described above is in conformity with the relevant European Union harmonization legislation: Directive 2014/68/EU.
These products are classified up to Category I, Annex II table 9 (liquids of group 2), in conformance with the prescriptions of the Annex III Module A of these Directives

Document signed for and on behalf of COMEVAL VALVE SYSTEMS, S.L. y CIA., Soc. Comanditaria, in El Puig - Valencia (Spain), on October 20, 2021




Enrique Bort
Managing director

The Declaration certifies the conformity with the mentioned Directives, it does not contain any warranty of properties in the sense of the product liability law, however. The safety hints of the product information supplied with the product must be observed. In case of a modification of the product not agreed with the manufacturer or of non-observance of the safety hints this Declaration loses its validity.

[flex_swing_check_valves_declaration_of_conformity-S107-uniwat-declaration-en.docx](#)



COMEVAL VALVE SYSTEMS, S.L. y CIA.,
Soc. Comanditaria
Les Rotes,15 (Poligono Industrial El Puig) 46540
EL PUIG (Valencia) SPAIN



EU DECLARATION OF CONFORMITY

in accordance with Pressure Equipment Directives 2014/68/EU

COMEVAL VALVE SYSTEMS, S.L. y CIA., Soc. Comanditaria, as manufacturer, declares that this Declaration is issued under its sole responsibility and belongs to the following product range:

Product	Brand
Roasting Ball Valves	UNIFLOW*
Series	Batch No.
BN2, BN3, BN23V	20
Nominal pressure	Nominal Size
PN24, PN16	DN16-100
Relevant Standards	
EN 12216-2/3, DIN 3540, EN ISO 228-1	

The product range described above is in conformity with the relevant European Union harmonization legislation: Directive 2014/68/EU.
These products are classified up to Category I, Annex II table 9 (liquids of group 2), in conformance with the prescriptions of the Annex III Module A of these Directives

DECLARATION OF INCORPORATION OF PARTLY COMPLETED MACHINERY

in accordance with Machinery Directive 2006/42/EC

COMEVAL VALVE SYSTEMS, S.L. y CIA., Soc. Comanditaria, as manufacturer, declares that this Declaration is issued under its sole responsibility and belongs to the above defined product range.


These products are considered as partly completed machinery when delivered by COMEVAL intended and ready to be assembled with electric, pneumatic and hydraulic thrust actuators, being in such a case in conformity with the relevant requirements of the Union harmonization legislation, Directive 2006/42/EC, acc. to its Annex I, Articles 1.1.2, 1.1.3, 1.1.5, 1.2.1, 1.3.1, 1.3.2, 1.3.4, 1.3.7, 1.3.9, 1.5.2, 1.5.4, 1.5.5, 1.5.6, 1.5.7, 1.6.1, 1.7.1, 1.7.2, 1.7.3, 1.7.4.

The product must not be put into service until the final machinery, into which it is to be incorporated, has been declared in conformity with the provisions of the Directive 2006/42/EC.

COMEVAL commits to submitting the relevant information on the partly completed machinery to the national competent authority via electronic transmission upon request. The relevant technical documentation pertaining to the machinery described in Annex VII, part B has been prepared.


Authorised person for documentation: Javier Galán

Document signed for and on behalf of COMEVAL VALVE SYSTEMS, S.L. y CIA., Soc. Comanditaria, in El Puig - Valencia (Spain), on October 20, 2021




Enrique Bort
Managing director

The Declaration certifies the conformity with the mentioned Directives, it does not contain any warranty of properties in the sense of the product liability law, however. The safety hints of the product information supplied with the product must be observed. In case of a modification of the product not agreed with the manufacturer or of non-observance of the safety hints this Declaration loses its validity.

[ball_valve_2_pieces_and_3_pieces_declaration_of_conformity-bv2_bv3_bv2md_bv3md-uniflow-certification-en.docx](#)



COMEVAL VALVE SYSTEMS, S.L. y CIA.,
Soc. Comanditaria
Les Rotes,15 (Poligono Industrial El Puig) 46540
EL PUIG (Valencia) SPAIN



EU DECLARATION OF CONFORMITY

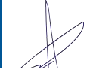
in accordance with Pressure Equipment Directives 2014/68/EU

COMEVAL VALVE SYSTEMS, S.L. y CIA., Soc. Comanditaria, as manufacturer, declares that this Declaration is issued under its sole responsibility and belongs to the following product range:

Product	Brand
Basket Strainers	UNIWAT*
Series	Batch No.
ST101F	20
Nominal pressure	Nominal Size
PN16	DN20-600
Relevant Standards	
EN 12216-3/A, DIN 3540, EN 1092-2	

The product range described above is in conformity with the relevant European Union harmonization legislation: Directive 2014/68/EU.
These products are classified up to Category I, Annex II table 9 (liquids of group 2), in conformance with the prescriptions of the Annex III Module A of these Directives

Document signed for and on behalf of COMEVAL VALVE SYSTEMS, S.L. y CIA., Soc. Comanditaria, in El Puig - Valencia (Spain), on October 20, 2021


Enrique Bort
Managing director

The Declaration certifies the conformity with the mentioned Directives, it does not contain any warranty of properties in the sense of the product liability law, however. The safety hints of the product information supplied with the product must be observed. In case of a modification of the product not agreed with the manufacturer or of non-observance of the safety hints this Declaration loses its validity.

[basket_strainers_declaration_of_conformity-st-uniwat-certificate-en.docx](#)



COMEVAL VALVE SYSTEMS, S.L. y CIA.,
Soc. Comanditaria
Les Rates,15 (Poligono Industrial El Puig) 46540
EL PUIG (Valencia) SPAIN



EU DECLARATION OF CONFORMITY
in accordance with Pressure Equipment Directives 2014/68/EU

COMEVAL VALVE SYSTEMS, S.L. y CIA., Soc. Comanditaria, as manufacturer, declares that this Declaration is issued under its sole responsibility and belongs to the following product range:

Product	Brand
Strainers	UNIFLOW®
Series	Batch No.
Q25	25
Nominal pressure	Nominal Size
PN40	DN6-80
Relevant standards: EN 12516-1/2/3	

The product range described above is in conformity with the relevant European Union harmonization legislation: Directive 2014/68/EU.

These products are classified up to Category I, Annex II table 9 (liquids of group 2), in conformance with the prescriptions of the Annex III Module A of these Directives

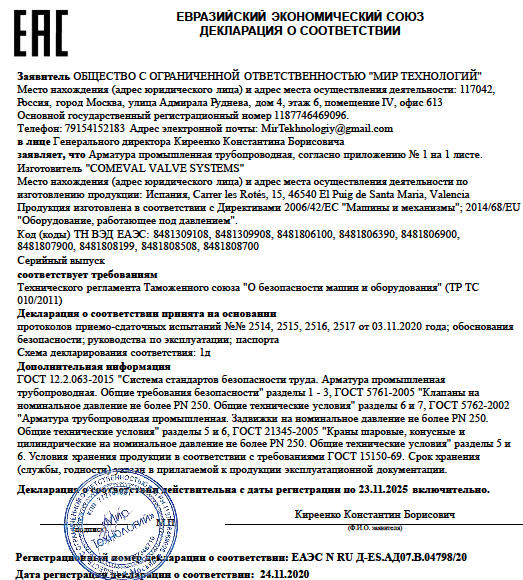
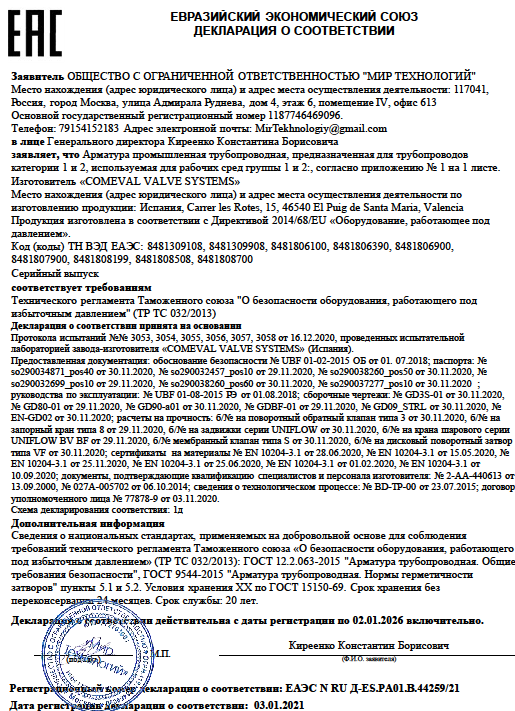
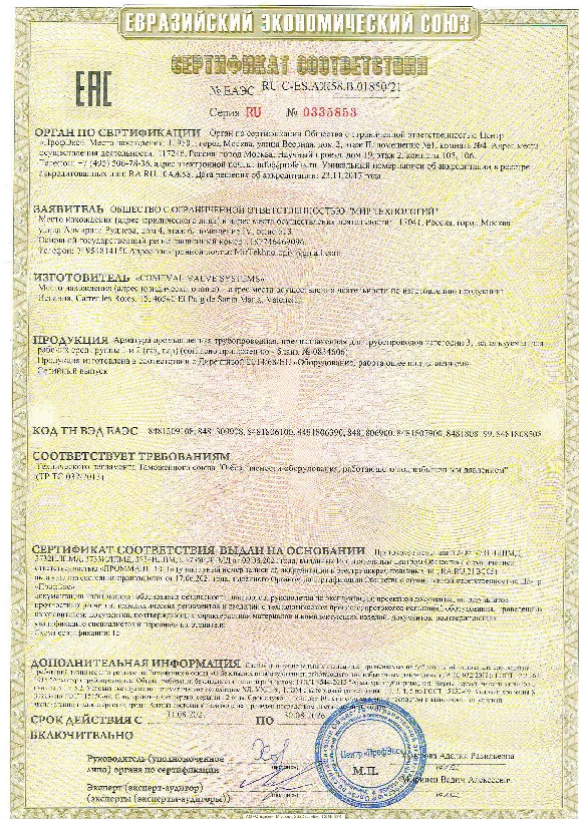
Document signed for and on behalf of COMEVAL VALVE SYSTEMS, S.L. y CIA., Soc. Comanditaria, in El Puig – Valencia (Spain), on October 20, 2021


Enrique Bort
Managing director

The Declaration certifies the conformity with the mentioned Directives, it does not contain any warranty of properties in the sense of the product liability law, however. The safety hints of the product information supplied with the product must be observed. In case of a modification of the product not agreed with the manufacturer or of non-observance of the safety hints this Declaration loses its validity.
stainless_steel_y_strainers_declaration_of_conformity-955-uniflow-certification-en.docx

EAC

The Eurasian Conformity mark (EAC, Russian: Евразийское соответствие) is a product marking to indicate that the products conforms to all technical regulations of the Eurasian Customs Union assessment procedures.



FIRE SAFE to API 6FA

This standard establishes the requirements for testing and evaluating the pressure-containing performance of API 6A and 6D valves when exposed to fire

ITIS B.V.
Danielöweg 6
NL-4451 HP Heinkenszand
T + 31 113 568515
info@itis-nl.com
www.itis-nl.com

ITIS Certificate
201600304-C002 rev.1

TUV SUD
Industrie Service

API6FA FIRE TEST QUALIFICATION CERTIFICATE

This certificate is to certify that the valve below has been tested in accordance with, and meets all requirements stated in API standard 6FA 3rd edition, April 1999, Reaffirmed: July 2006 Specification for Fire Test for Valves.

Test valve details

Manufacturer	: Cornival Valve Systems, S.L. y CIA
Address	: Les Rotes 15, 46540 EL PLIG (Valencia), SPAIN
Brand	: UNIFLOW
Nominal size	: NP52
Pressure rating	: Class 150
Flow direction	: Bi-directional
Type	: Floating ball valve
Weight	: 15kg
Bore	: Full bore
Drawing number	: GD-3FA01000A10050 (26-03-2016)
Body material	: ASTM A105
Body gasket	: SS304 + graphite
Bolt/nut material	: A193 B7/A194 2H
Ball material	: ASTM A105 + ENP
Seat material	: RPTFE
Stem material	: A182 F6a
1 st Stem seal material	: RPTFE (22 x 28 x 2mm)
2 nd Stem seal material	: Flexible graphite (22 x 32 x 16mm)
Identification No.	: 00304002
Markings on valve	: Body material, heat no. and Serial number on valve body

Scope of other valve sizes and pressure ratings qualified by this test.

Tested valve	Scope of Size	Scope of pressure rating
NP52 API 6D, DN50 150 API 6D, PN20	NP52, 2 1/2, 3 and 4 API 6D DN50, DN65, DN80 and DN100 1 1/2", 2 1/2", 2 3/4", 3 1/2", 4 1/2" API 6A	150, 300 API 6D PN20, PN50

This certificate is only valid in conjunction with the full ITIS BV test report number 201600304-R002 rev.1

Name (ITIS): J. Meijer
Name authority (TUV SUD): J. van Remoortere
Date: 07-10-2016

ITIS B.V.
Danielöweg 6
NL-4451 HP Heinkenszand
T + 31 113 568515
info@itis-nl.com
www.itis-nl.com

ITIS Certificate
201600304-C001 rev.1

TUV SUD
Industrie Service

API6FA FIRE TEST QUALIFICATION CERTIFICATE

This certificate is to certify that the valve below has been tested in accordance with, and meets all requirements stated in API standard 6FA 3rd edition, April 1999, Reaffirmed: July 2006 Specification for Fire Test for Valves.

Test valve details

Manufacturer	: Cornival Valve Systems, S.L. y CIA
Address	: Les Rotes 15, 46540 EL PLIG (Valencia), SPAIN
Brand	: UNIFLOW
Nominal size	: NP51
Pressure rating	: Class 150
Flow direction	: Bi-directional
Type	: Floating ball valve
Weight	: 49kg
Bore	: Full bore
Drawing number	: GD-3FA01000A10100 (26-03-2016)
Body material	: ASTM A105
Body gasket	: SS304 + graphite
Bolt/nut material	: A193 B7/A194 2H
Ball material	: ASTM A105 + ENP
Seat material	: RPTFE
Stem material	: A182 F6a
1 st Stem seal material	: RPTFE
2 nd Stem seal material	: O-ring (32 x 2.5)
3 rd Stem seal material	: Flexible graphite (28 x 40)
Identification No.	: 00304001
Markings on valve	: Body material, heat no. and Serial number on valve body

Scope of other valve sizes and pressure ratings qualified by this test.

Tested valve	Scope of Size	Scope of pressure rating
NP51 API 6D, DN100 150 API 6D, PN20	NP51, 4, 6 API 6D DN100, DN125, DN150 and DN200 4 1/2", 5 1/2", 7 1/2" API 6A	150, 300 API 6D PN20, PN50

This certificate is only valid in conjunction with the full ITIS BV test report number 201600304-R001 rev.1

Name (ITIS): J. Meijer
Name authority (TUV SUD): J. van Remoortere
Date: 07-10-2016

ITIS B.V.
Danielöweg 6
NL-4451 HP Heinkenszand
T + 31 113 568515
info@itis-nl.com
www.itis-nl.com

ITIS Certificate
201500377-C001

TUV SUD
Industrie Service

API6FA FIRE TEST QUALIFICATION CERTIFICATE

This certificate is to certify that the valve below has been tested in accordance with, and meets all requirements stated in API standard 6FA 3rd edition, April 1999, Reaffirmed: July 2006 Specification for Fire Test for Valves.

Test valve details

Manufacturer	: Cornival Valve Systems, S.L. y CIA
Address	: Les Rotes 15, 46540 EL PLIG, Valencia, Spain
Brand	: UNIFLOW
Nominal size	: 8inch
Pressure rating	: 150lbs
Flow direction	: Bi-directional
Type	: Trunion mounted ball valve
Weight	: 255kg
Bore	: Full bore
Drawing number	: GD-3FA060300A1C200 (12-06-2015)
Body material	: A105
Bonnet material	: A105
Bonnet/body gasket	: Stainless steel 304 + Graphite (670x62x3.5)
Stud bolt material	: 35CrMo (M12x25)
Ball material	: A105 + ENP
Seat material	: PTFE
Stem material	: A182 F6a
Stem seal material	: Graphite 2x (645x62x1:11X01)
Lantern ring	: 2Cr13 (645x62x4)
Identification No.	: 201500377001
Markings on valve	: Body material, heat no. and Serial number on valve body
Gearbox	: Yes

Scope of other valve sizes and pressure ratings qualified by this test.

Tested valve	Scope of Size	Scope of pressure rating
8inch API 6D, DN200 150 API 6D, PN20	8, 10, 12, 14, 16inch API 6D DN200, DN250, DN300, DN350, DN400 9inch, 11inch API 6A	150, 300 API 6D PN20, PN50

This certificate is only valid in conjunction with the full ITIS BV test report number 201500377-R001

Name (ITIS): J. Meijer
Name authority (TUV SUD): P. Dorel
Date: 02-09-2015

FIRE SAFE to API 607

This standard establishes the requirements for testing and evaluating the pressure-containing performance of API 6A and 6D valves when exposed to fire



ITIS BV
Columbusweg 64
NL-4462 HB Goes
T +31 113568515
info@itis-nl.com
www.itis-nl.com

Test certificate:
202000275-C001 Rev.1



Industrie Service

API 607 FIRE TEST QUALIFICATION CERTIFICATE

This certificate is to certify that the valve below has been tested in accordance with, and meets all requirements stated in API Standard 607, seventh edition, June 2016 'Fire Test for Quarter-turn Valves and Valves Equipped with Nonmetallic Seats'.

Test valve details

Manufacturer	: Cornwell Valve Systems S.L. y CIA
Address	: Les Rotés 15, E-46540 EL PUIG (Valencia, ES)
Brand	: UNIFLOW
Nominal size	: 4 inch
Pressure rating	: Class 300
Flow direction	: Bi-directional
Type	: Floating Ball valve
Weight	: 95kg
Bore	: Full bore
Drawing number	: GDBF_A3_100 date:13-07-2020 Rev. 0
Body material	: A105
Body gasket material	: 2x 304 + Graphite sealing ring
Ball material	: A105 + N60
Seat material	: PTFE
Stem material	: 17-4PH
Stem seal material	: Graphite
Identification number	: 20-95262-31
Gearbox	: N.A.

Scope of other sizes and pressures ratings qualified by this test according to API 607

Tested valve	Scope of Size	Scope of pressure rating
NPS 4 Class 300	NPS 4; 5; 6; 8 API 6D DN 100; 125; 150; 200	Class 300; 400; 600

This certificate refers to the above mentioned test valve. This certificate does not imply assessment of the production of the valves. This certificate is only valid in conjunction with the full ITIS BV test report number 202000275-R001 Rev.1

Approved signatory

☒ TESTED
☐ REVIEW
☐ WITNESSED
Date/Signature



J. van der Hoeft
Industrial Testing & Inspection Services ITIS

14-09-2020

Name Authority (TUV SUD)



Me. I. van Remoortere
14-09-2020

Page 1 of 1



ITIS BV
Columbusweg 64
NL-4462 HB Goes
T +31 113568515
info@itis-nl.com
www.itis-nl.com

Test certificate:
202000490-C001



Industrie Service

API 607 FIRE TEST QUALIFICATION CERTIFICATE

This certificate is to certify that the valve below has been tested in accordance with, and meets the requirements for operability, through seat leakage and external leakage stated in API Standard 607, seventh edition, June 2016 'Fire Test for Quarter-turn Valves and Valves Equipped with Nonmetallic Seats'.

Test valve details

Manufacturer	: Cornwell Valve Systems, S.L. y CIA
Address	: Carrer les Rotés, 15, 46540 El Puig de Santa Maria, Valencia, Spain
Brand	: UNIFLOW
Nominal size	: DN100
Pressure rating	: Class 150
Flow direction	: Bi-directional
Type	: Floating Ball valve
Weight	: 53.5kg
Bore	: Full bore
Drawing number	: FLANGED_STAINLESS_STEEL_FLOATING_BALL_VALVES-BV4M-UNIFLOW-GENERAL_DRAWING-EN-G005 date:23-11-2020
Body material	: F304 / F304L
Ball material	: CF8
Seat material	: PTFE
Stem material	: F304
Body gasket material	: 304 + Graphite
Stem seal material	: 3x Graphite
Identification number	: 11K0058A

According to API standard 607, the specified range for covering other sizes/pressure classes is:


Tested valve	Scope of Size	Scope of pressure rating
NPS 4 Class 150	NPS 4; 5; 6; 8 DN 100, 125; 150; 200	Class 150; 300

Disclaimer: Under no circumstances ITIS B.V. can be held responsible applying the above mentioned covering range

This certificate refers to the above mentioned test valve. This certificate does not imply assessment of the production of the valves. This certificate is only valid in conjunction with the full ITIS BV test report number 202000490-R001.


Approved signatory

☒ TESTED
☐ REVIEW
☐ WITNESSED
Date/Signature


J. van der Hoeft
Industrial Testing & Inspection Services ITIS

12-01-2021





Name Authority (TUV SUD)


I. van Remoortere
12-01-2021

page 1 of 1

WRAS APPROVAL

The purpose of WRAS is to contribute to the protection of public health by preventing contamination of public water supplies and encouraging the efficient use of water by promoting and facilitating compliance with the Water Supply (Water Fittings) Regulations and Byelaws in Scotland.

<div><p>This certifies that</p><p>COMEVAL VALVE SYSTEMS, S.L. Y CIA. SOC. COMANDATARIA</p><p>has had the undermentioned product examined, tested and found, when correctly installed, to comply with the requirements of the United Kingdom Water Supply (Water Fittings) Regulations and Scottish Water Byelaws.</p><p>VF700P(R) & VF750P(R) BUTTERFLY VALVES</p><p><small>The certificate by itself is not evidence of a valid WRAS Approval. Confirmation of the current status of an approval must be obtained from the WRAS Directory (www.wras.co.uk/directory)</small></p><p>The product so mentioned will be valid until the end of:</p><p>December 2021</p><p>1612075</p><p>Certificate No.</p><p><i>J Funnell</i> Secretary</p><p><i>K. Heston</i> Chairman, Product Assessment Group</p></div>	<div><p>This certifies that</p><p>COMEVAL VALVE SYSTEMS, S.L. Y CIA. SOC. COMANDATARIA</p><p>has had the undermentioned product examined, tested and found, when correctly installed, to comply with the requirements of the United Kingdom Water Supply (Water Fittings) Regulations and Scottish Water Byelaws.</p><p>UNIWAT 504 RANGE OF GATE VALVES</p><p><small>The certificate by itself is not evidence of a valid WRAS Approval. Confirmation of the current status of an approval must be obtained from the WRAS Directory (www.wras.co.uk/directory)</small></p><p>The product so mentioned will be valid until the end of:</p><p>February 2023</p><p>1802107</p><p>Certificate No.</p><p><i>J Funnell</i> Secretary</p><p><i>[Signature]</i> Chairman, Product Assessment Group</p></div>
<div><p>This certifies that</p><p>COMEVAL VALVE SYSTEMS, S.L. Y CIA. SOC. COMANDATARIA</p><p>has had the undermentioned product examined, tested and found, when correctly installed, to comply with the requirements of the United Kingdom Water Supply (Water Fittings) Regulations and Scottish Water Byelaws.</p><p>630W RANGE OF IN-LINE 'Y' PATTERNED STRAINERS</p><p><small>The certificate by itself is not evidence of a valid WRAS Approval. Confirmation of the current status of an approval must be obtained from the WRAS Directory (www.wras.co.uk/directory)</small></p><p>The product so mentioned will be valid until the end of:</p><p>May 2024</p><p>1905085</p><p>Certificate No.</p><p><i>J Funnell</i> Secretary</p><p><i>[Signature]</i> Chairman, Product Assessment Group</p></div>	<div><p>This certifies that</p><p>COMEVAL VALVE SYSTEMS, S.L. Y CIA. SOC. COMANDATARIA</p><p>has had the undermentioned product examined, tested and found, when correctly installed, to comply with the requirements of the United Kingdom Water Supply (Water Fittings) Regulations and Scottish Water Byelaws.</p><p>UNIWAT 5107 RANGE OF SWING GATE NON-RETURN VALVES (NOT SUITABLE FOR BACKFLOW PROTECTION)</p><p><small>The certificate by itself is not evidence of a valid WRAS Approval. Confirmation of the current status of an approval must be obtained from the WRAS Directory (www.wras.co.uk/directory)</small></p><p>The product so mentioned will be valid until the end of:</p><p>June 2023</p><p>1806077</p><p>Certificate No.</p><p><i>J Funnell</i> Secretary</p><p><i>[Signature]</i> Chairman, Product Assessment Group</p></div>



This certifies that

COMEVAL VALVE SYSTEMS, S.L. Y CIA. SOC. COMANDATARIA

has had the undermentioned product examined, tested and found, when correctly installed, to comply with the requirements of the United Kingdom Water Supply (Water Fittings) Regulations and Scottish Water Byelaws.

VF701/751/7U1 BUTTERFLY VALVES

The certificate by itself is not evidence of a valid WRAS Approval. Confirmation of the current status of an approval must be obtained from the WRAS Directory (www.wras.co.uk/directory)

The product so mentioned will be valid until the end of:

January 2025

2001122

Certificate No.

Secretary

Chairman, Product Assessment Group



This certifies that

COMEVAL VALVE SYSTEMS, S.L. Y CIA. SOC. COMANDATARIA

has had the undermentioned product examined, tested and found, when correctly installed, to comply with the requirements of the United Kingdom Water Supply (Water Fittings) Regulations and Scottish Water Byelaws.

TORAFLEX S10, S15, S20 & S30 RANGES OF EXPANSION BELLOWS

The certificate by itself is not evidence of a valid WRAS Approval. Confirmation of the current status of an approval must be obtained from the WRAS Directory (www.wras.co.uk/directory)

The product so mentioned will be valid until the end of:

July 2020

1507338

Certificate No.

Secretary

Chairman, Product Assessment Group



This certifies that

COMEVAL VALVE SYSTEMS, S.L. Y CIA. SOC. COMANDATARIA

has had the undermentioned product(s) examined, tested and certified as being of an appropriate quality and standard as required in the Water Supply (Water Fittings) Regulations and Scottish Water Byelaws, subject to scheme requirements being met when installed.

Model Numbers

VF7 RANGE OF HANDWHEEL & GEAR OPERATED BUTTERFLY VALVES

The certificate by itself is not evidence of a valid WRAS Approval. Confirmation of the current status of an approval must be obtained from the WRAS Approvals Directory (www.wras.co.uk/directory)

The product so mentioned will be valid until the end of:

October 2025

Certificate No.

2010399

Ian Hughes,
WRAS Approvals Manager

8. Annexes

8.1 Corporate Catalogue – International Business Unit.

8.2 Reference List.

8.3 Quality Manual

8.4 Typical Format Material Test Report 3.1

8.5 Typical Format Inspection & Test Plan

8.6 Standard Terms and Conditions (Guarantee Coverage)

8.7 Engineering Catalogues

8.8 Certificate of Registration